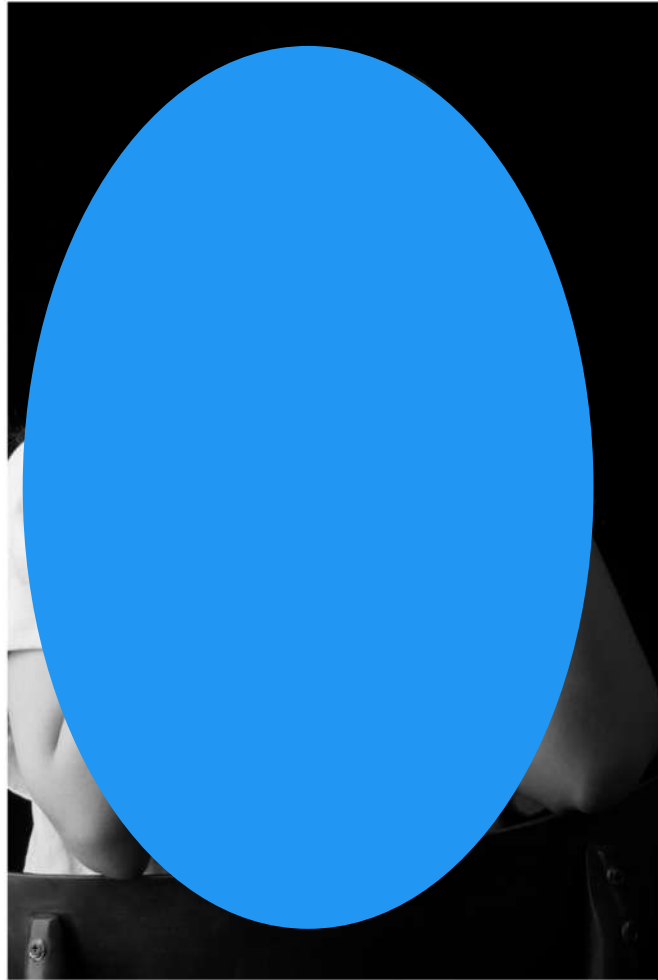




Civil engineering draft person

BIRTH DATE: [Redacted]  
EMAIL: [Redacted]  
MOBILE: [Redacted]

این پورتفولیو به دلیل داشتن کپی رای  
بخش های مختلف از آن با مسئولیت و  
پوشش داده شده است.  
جهت سفارش پورتفولیو با شماره تماس 02190  
وی اس ای ت ri.tratneve  
تماس بگیرید



Education & qualification  
Title of degree: B.Sc. in civil Engineering draft person  
Name of School : [Redacted]  
D [Redacted] ended: 1/1 [Redacted]  
Date completed: [Redacted]

ABOUT ME :

An enthusiastic and highly motivated individual who has a clear understanding of the role and responsibilities associated with being a civil draft person. [Redacted]  
ability to maintain and [Redacted] the working relationships with designing teams

SKILLS

- AUTOCAD [Progress bar]
- AUTODESK REVIT [Progress bar]
- SKETCHUP [Progress bar]
- RHINOCEROS [Progress bar]
- 3D MAX + VRAY [Progress bar]

ENSCAPE [Redacted]

PHOTOSHOP [Progress bar]

ABILITIES

- CIVIL DRAFTING [Progress bar]
- DEVELO DESIGN [Progress bar]
- MODELING [Progress bar]
- DETAIL DESIGN [Progress bar]



RENDERING [Progress bar]

LANGUAGE

- PERFECT [Progress bar]
- ENGLISH [Progress bar]

STRENGTH

- BIM Modelling
- Team Coordination
- Creative Design Solutions
- Revit
- Rhino
- Lumion
- V-Ray
- Adobe Suite
- MS Office
- Autocad
- Naviswo [Redacted]
- [Redacted]
- Motion Graphic

Designed by www.eventart.ir | mobile: 09120891902 | Portfolio



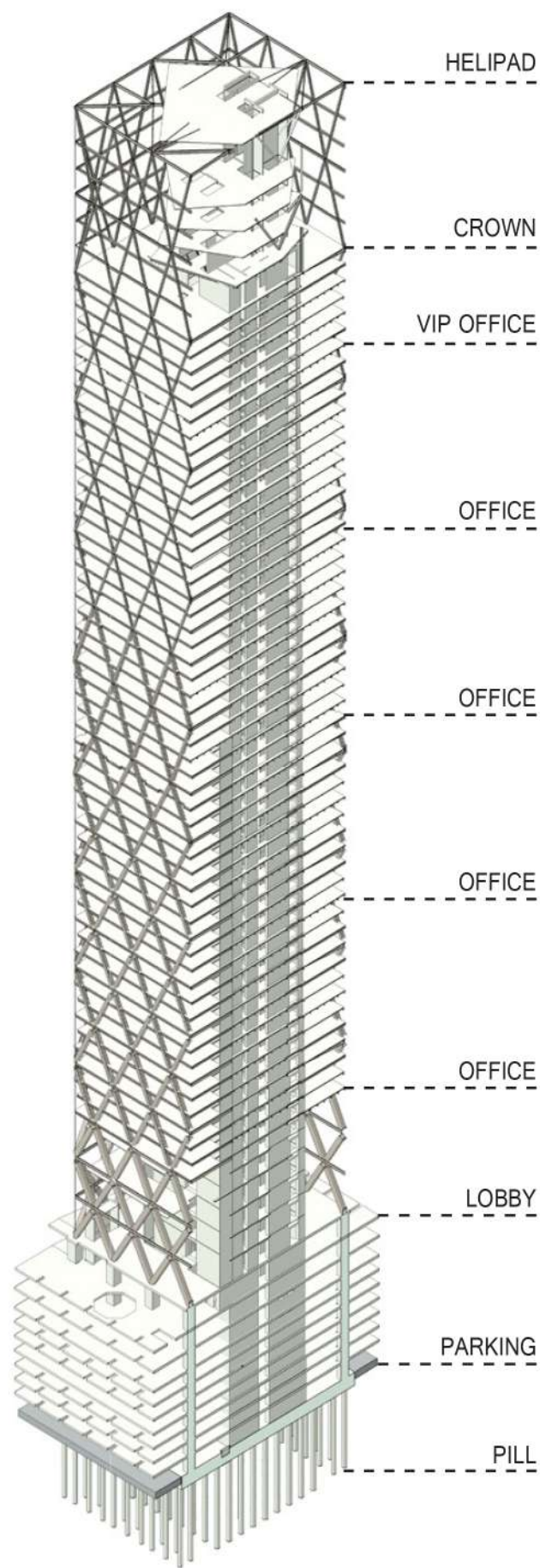
این پورتفولیو به دلیل داشتن کپی رای  
بخش های مختلفی از آن با مسطیول و یا خطوط رنگی  
پوشیده شده است.  
جهت سفارش پورتفولیو با شماره تماس 20919802190  
وی اس ای ت ri.tratneve  
تماس بگیرید

location : ████████ / IRAN  
company : PAN ██████████  
position : TEAM COORDINATOR / ARCHITECT ██████████  
tasks : BIM COORDINATION & LOCAL  
CODES' REVISION OF CD PHASE  
DRAWINGS / MODELLING ██████████  
duration : 2017 - 2019

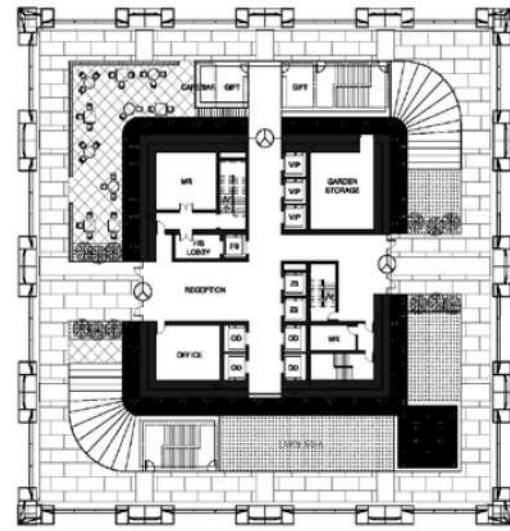
Designed by [www.eventart.ir](http://www.eventart.ir) | mobile: 09120891902 | Portfolio



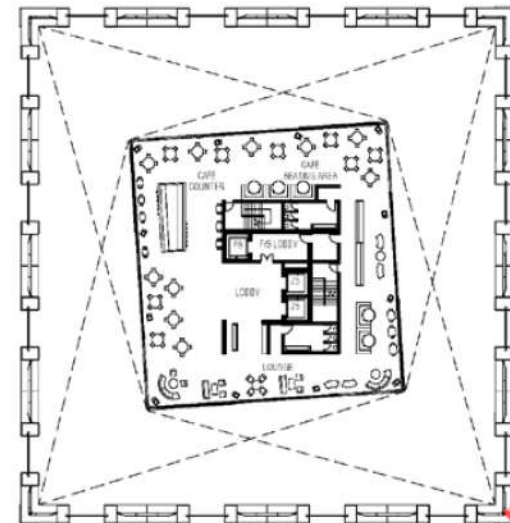




TOWER OVERALL 3D SECTION



CROWN BASE PLAN



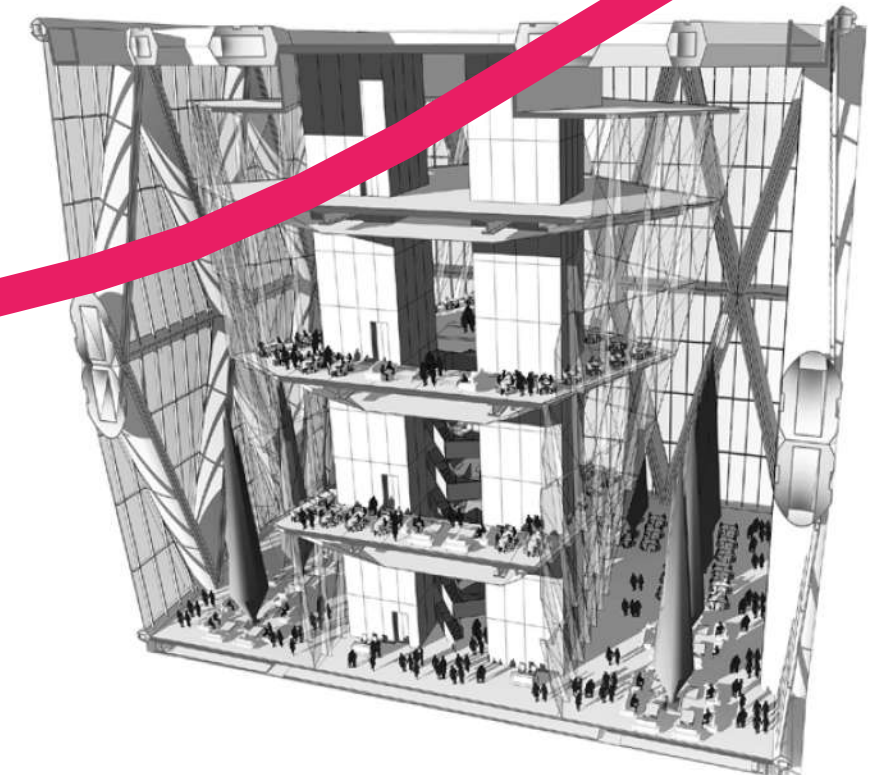
CROWN UPPER PLAN SAMPLE

**CROWN & ROOF GARDEN**

This proposal is aimed to maintain the functional and technical requirements in the same spatial volume. We have introduced intermediate levels dedicated to service and BOH areas. The base of the Crown exterior envelope is intentionally designed as a solid volume with stone louvres to allow the possibility to conceal any technical opening and create a clear separation from the roof garden level.



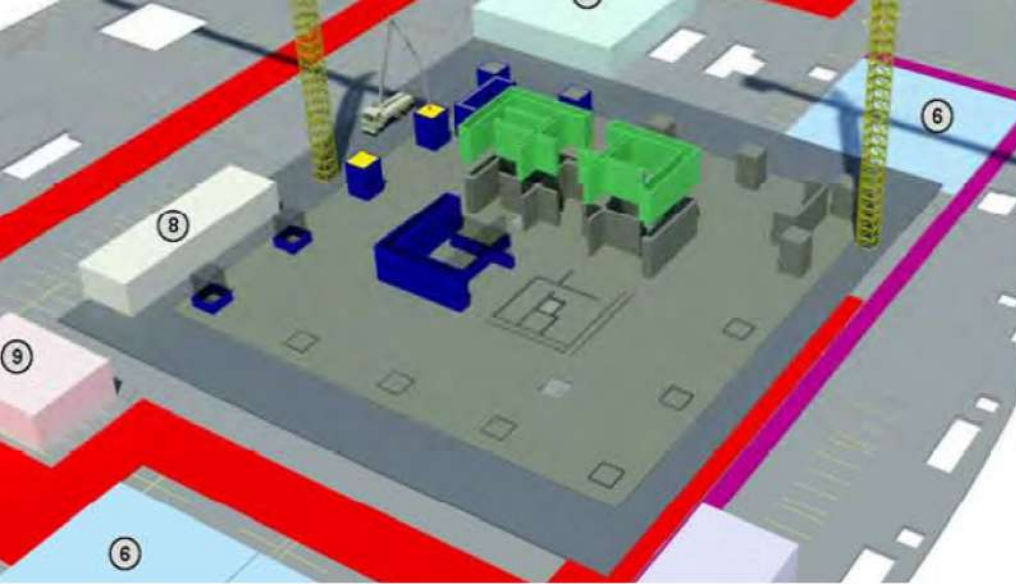
CROWN 3D RENDER VIEW



CROWN 3D SECTION VIEW

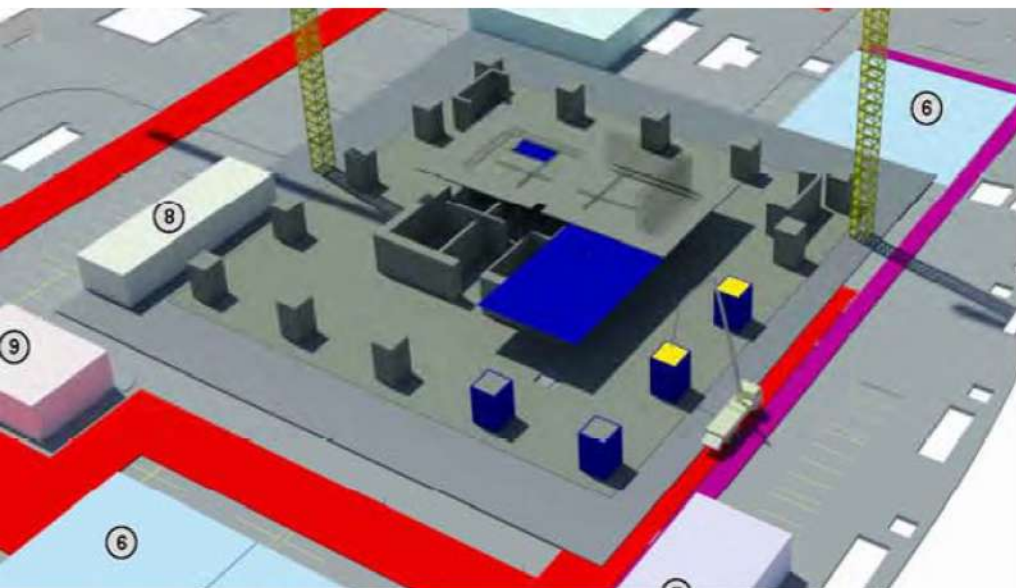
Designed by [www.erentart.ir](http://www.erentart.ir) | mobile: 09120891902 | Portfolio





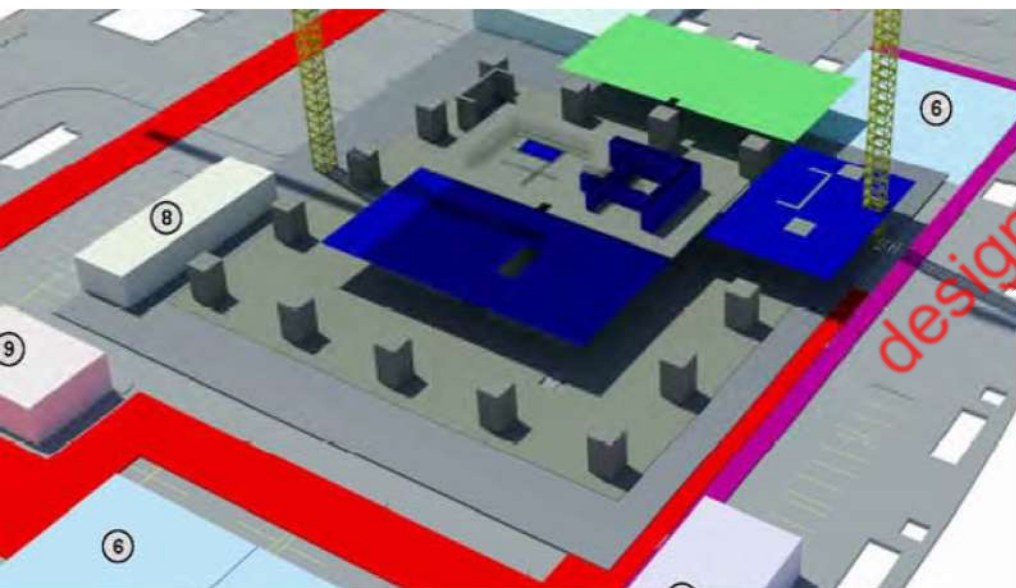
**SEQUENCE 16**

Concrete wall framing removal for the core



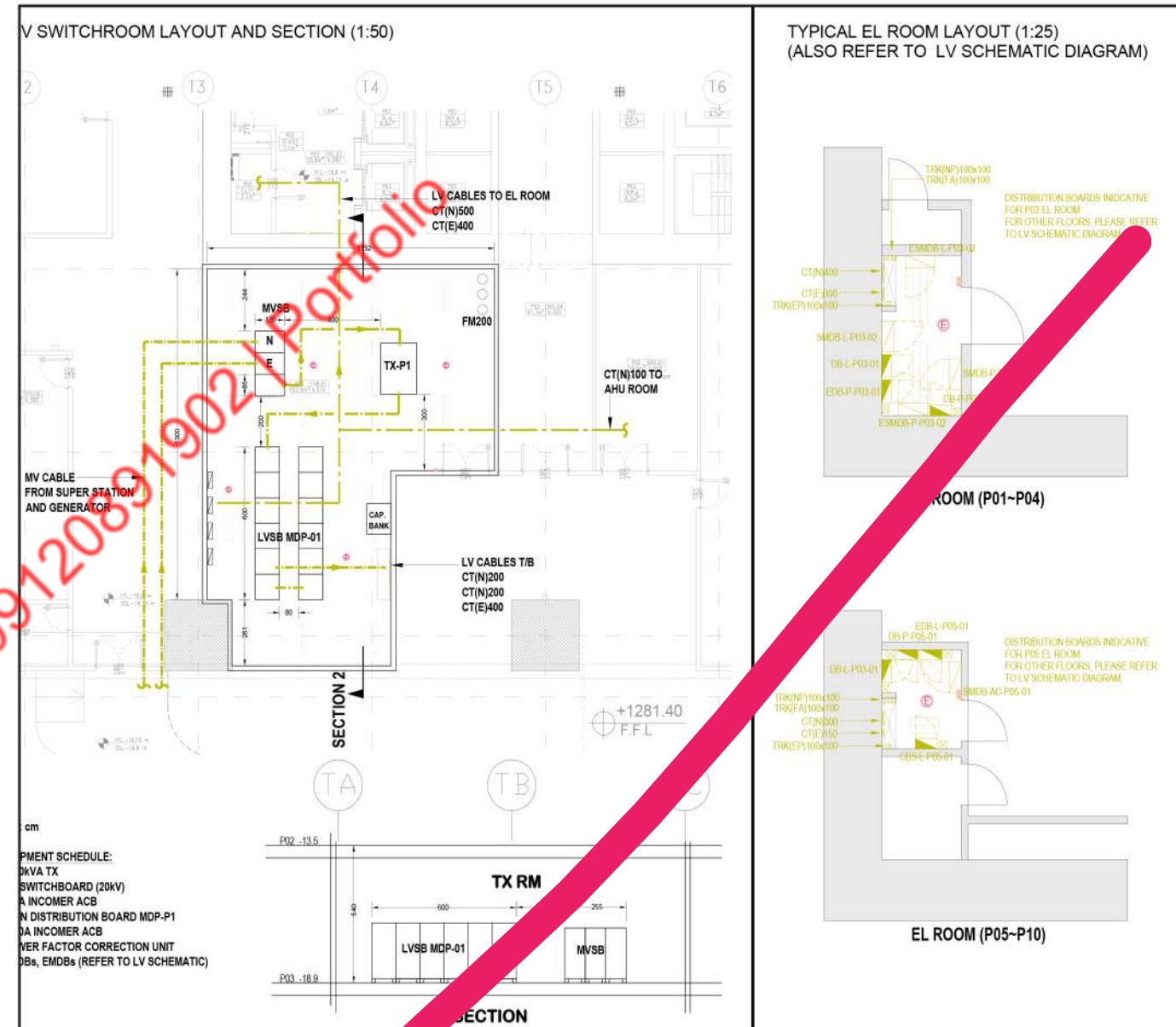
**SEQUENCE 32**

Core Slab framing and concrete Casting



**SEQUENCE 45**

Core Slab framing and frame removal



**PARTS OF TOWER ELECTRICAL LAYOUT & PLAN**

**TOWER OVERALL SERVICE IDEA**

The office tower will be cooled and heated using air-cooled chiller and gas fired boiler to provide tenants a comfortable internal environment. The building will contain a core arrangement which will facilitate services distribution across the floor plate, the core also containing a central bank of passenger lifts located within the core, providing access to each floor. Service lifts will also be incorporated within the core to facilitate maintenance.

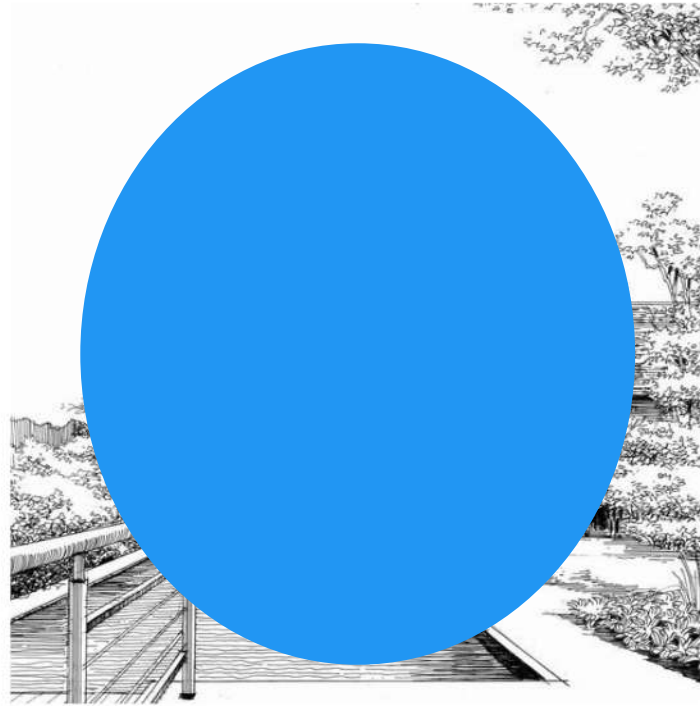




location : [REDACTED] / IRAN  
company : [REDACTED]  
position : TEAM COORDINATOR  
tasks : CIVIL DRAFTING, PREP. OF 2D & 3D DRAWINGS  
date : [REDACTED]

این پورترفولیو و به دلیل داشتن کپی رایت  
بخش های مختلفی از آن با مسطولی و یا خطوط رنگی  
پوشیده شده است.  
جهت سفارش پورترفولیو و با شماره تماس 20919802190  
وی اس ای ت ri.tratneve  
تماس بگیری د





*"Beauty is precious in life but is immortal in art".*

#### PROJECT BRIEF :

This highly detailed project proposes a brand new house which will definitely dominate the landscape in the location where it's based. According to the client's request and recommendation, a 3-story chalet designed based on regulations and restrictions. The design concept involves the use of new concrete and old wood, creating maximum attention to energy efficiency and charming place for the owners: the most modern and a minimal chalet.

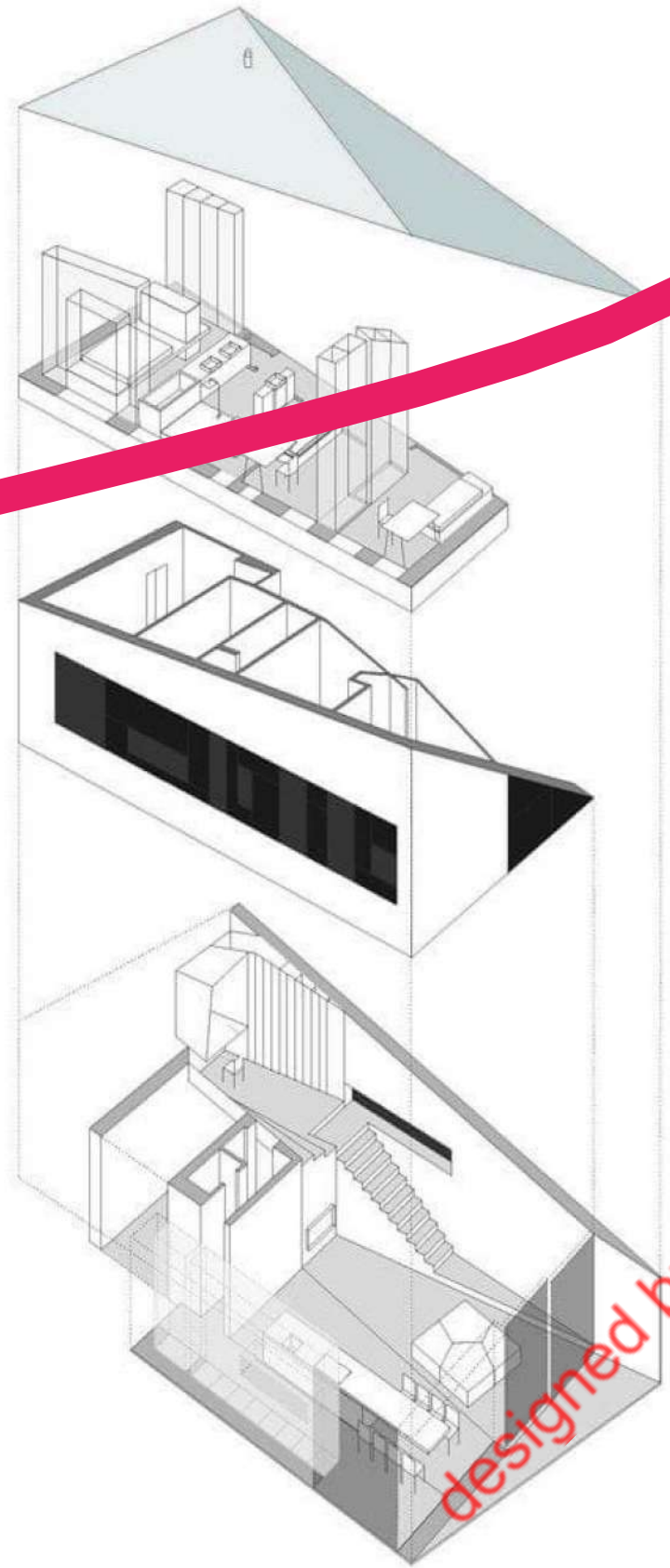
designed by [www.eventart.ir](http://www.eventart.ir) | mobile: 09120891902 | Portfolio

این پورترفولیو و به دلیل داشتن کپی رای  
بخش های مختلفی از آن با مسطیل و یا خطوط رنگی  
پوشیده شده است.  
جهت سفارش پورترفولیو و شماره تماس 919802190  
وی اس ای ت ri.tratneve  
تماس بگیرید



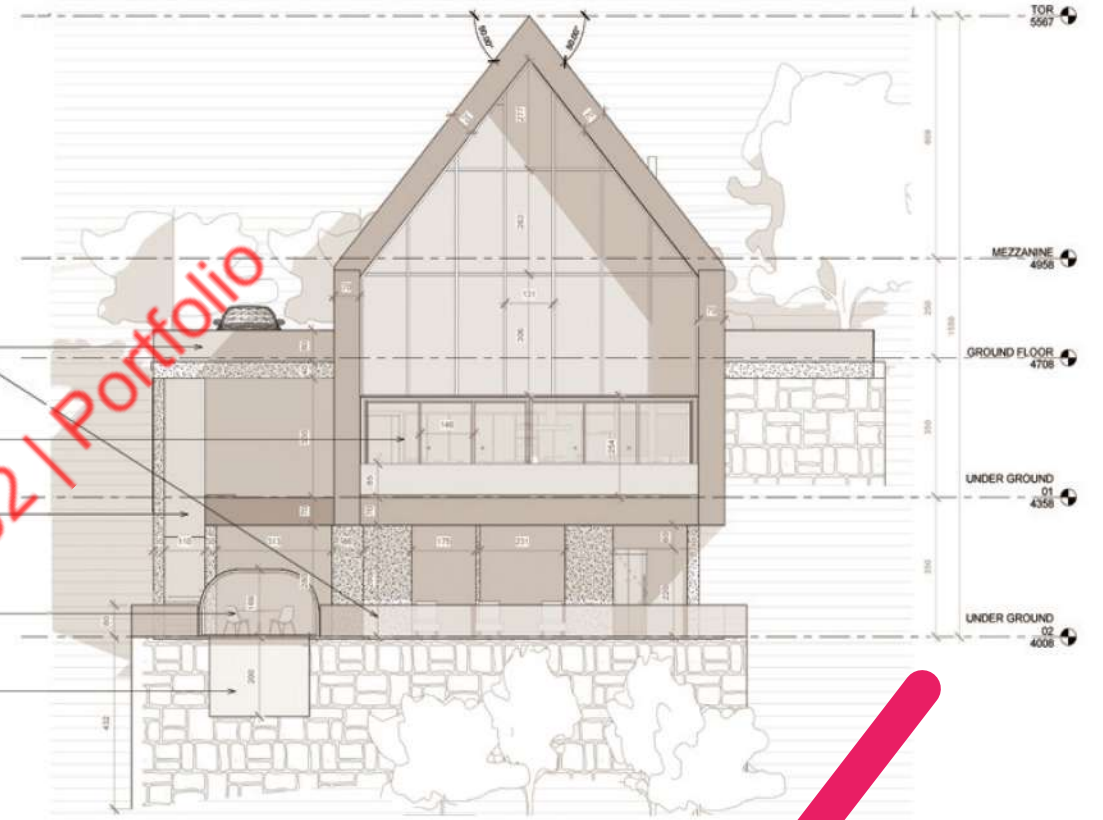


1st floor  
child room  
guest room  
bathroom  
living room  
dining room  
kitchen



EXPLODED 3D LEVELS

NATURAL GRASS GUARD - 80 CM HEIGHT  
FULL SLIDING DOOR  
DOUBLE HEIGHT STAIR BOX  
INFLATABLE POOL COVER  
POOL'S GLASS WALL



SOUTH ELEVATION



WEST ELEVATION

designed by [www.eventart.ir](http://www.eventart.ir) | mobile: 09120891902 | Portfolio



این پورتفولیو و به دلیل داشتن کپی رای  
بخش های مختلفی از آن با مسطی و یا خطوط رنگی  
پوشیده شده است.

جهت سفارش پورتفولیو و با شماره تماس 20919802190  
ویا سایت [ri.tratneve](http://ri.tratneve)  
تماس بگیرید



CROWN 3D SECTION



CROWN 3D SECTION



CROWN 3D SECTION



CROWN 3D SECTION

designed by [www.eventart.ir](http://www.eventart.ir)

MAIN COLOUR		
Wall & ceiling : white painted	Statuario marble tile / slab Kitchen top & backsplash Bathroom walls	
SECONDARY		
Stone tiles; outdoor deck / balcony/terraces	Light grey epoxy paint on cement plaster (aux concrete)	Dark grey epoxy paint on cement plaster
EMPHASIS		
Outdoor walls: Aluminum composite panel or Metal slat panel - Dark Grey	Indoor Flooring: White Oak	

## COLOUR SCHEME

The idea behind the colour scheme is consisting of three main colours while they sit together create a master piece. The main colours, Secondary colours and emphasis. The main colour which here chose to be light and Gray is considered for floors and walls, most dominant elements. The secondary colour chose for special and dominant elements like structures. The Emphasis colour have been chose for especial elements in the space like living room's sofa and etc.



ROOF409

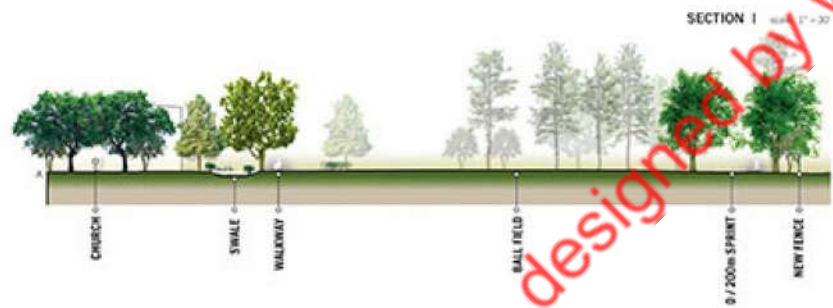
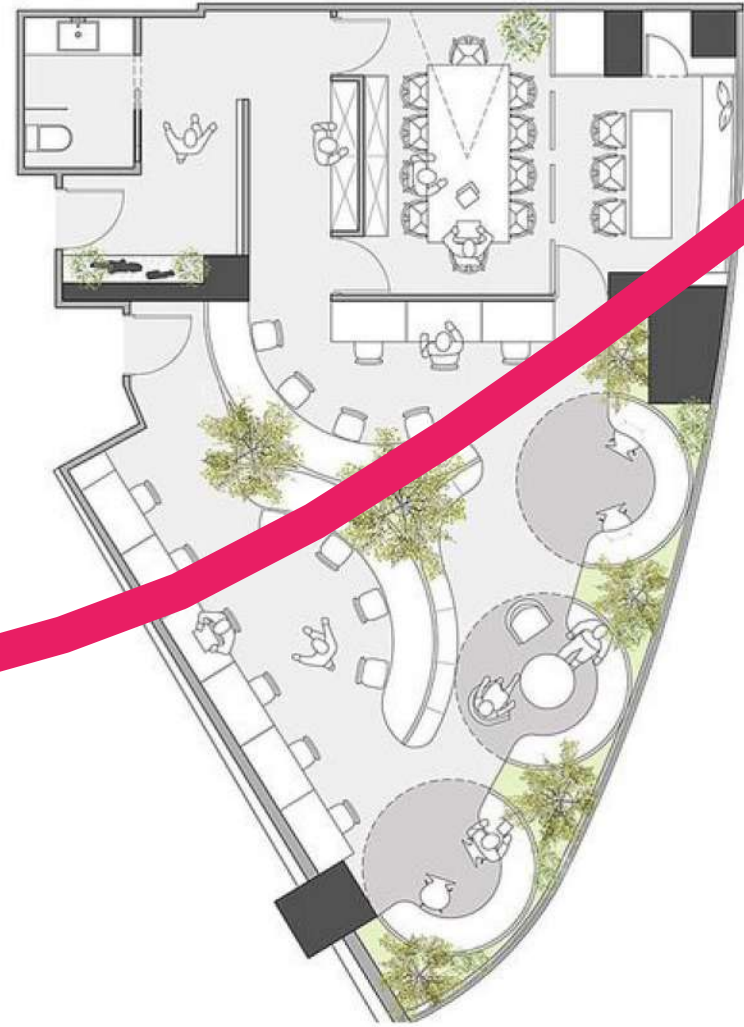
## FACADE & ROOF-TOP

location : TEHRAN  
company : PRIVATE SERVICE  
position : TEAM COORDINATOR  
tasks : CONCEPT DESIGN, 2D & 3D DRAWINGS, DETAILING  
date :

این پورترفولیو و به دلیل داشتن کپی رای  
بخش های مختلفی از آن با مستطیل و یا خطوط رنگی  
پوشیده شده است.  
جهت سفارش پورترفولیو و با شماره تماس 20919802190  
ویا سایت ri.tratneve  
تماس بگیرید

designed by www.eventart.ir | mobile: 09120891902 | Portfolio





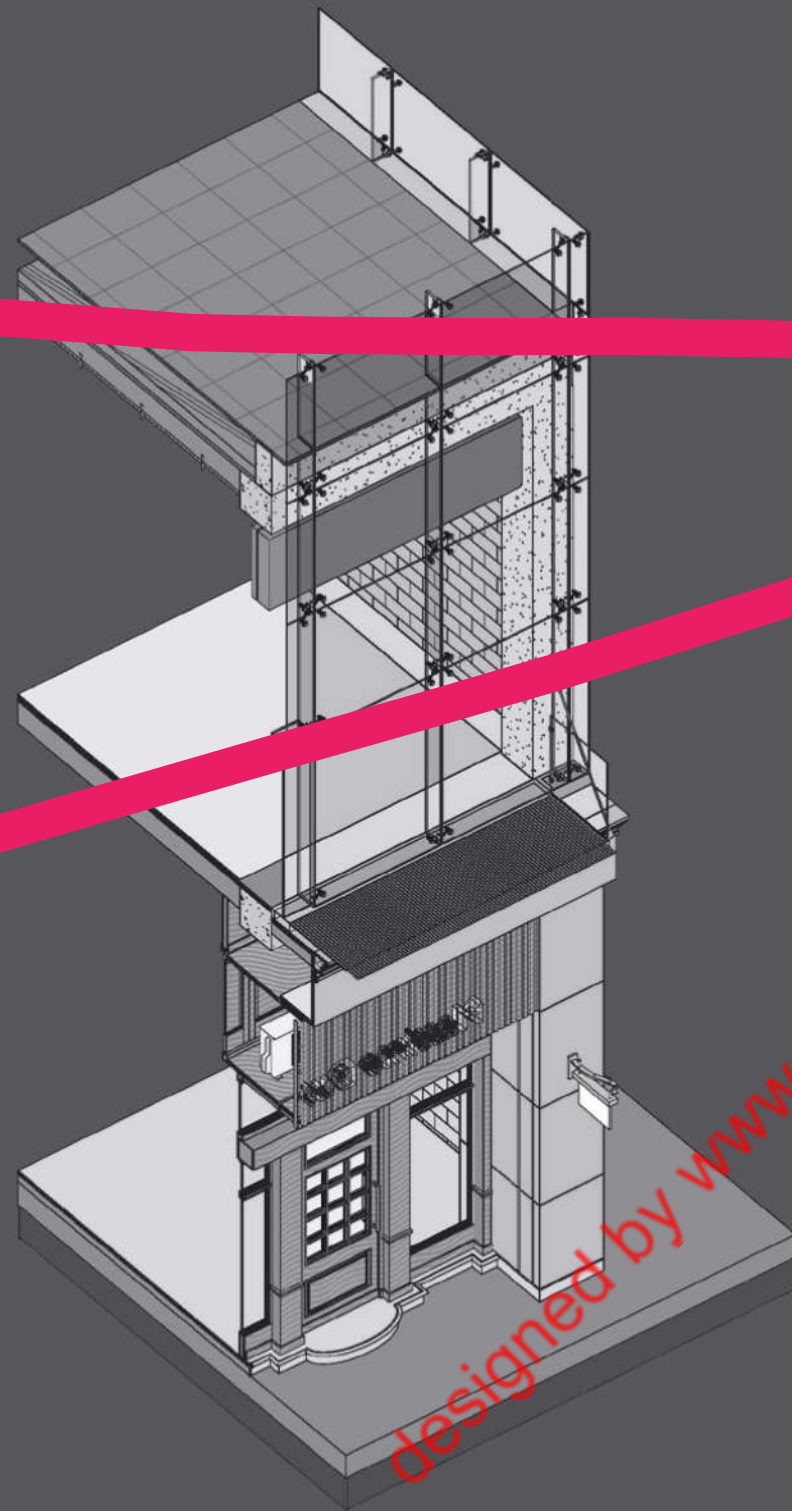
ROOF GARDEN PLAN



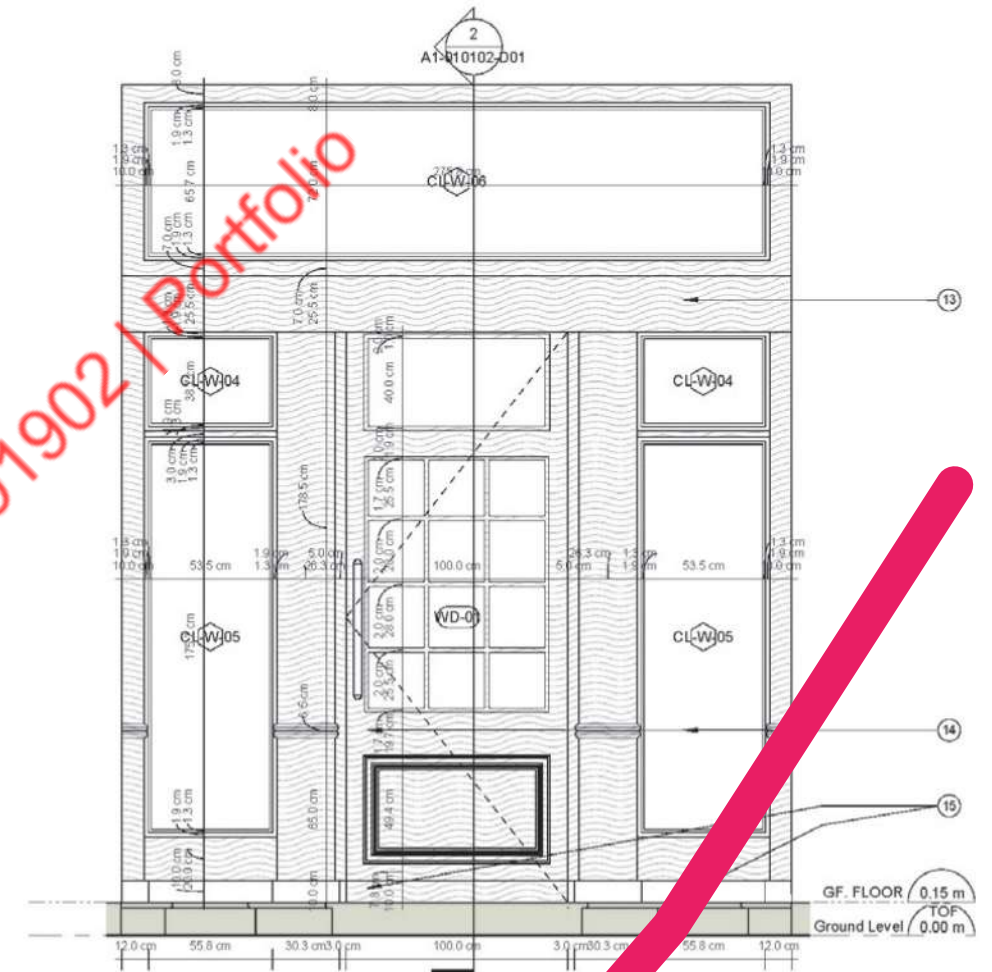
STREET FACADE VIEW

designed by [www.eventart.ir](http://www.eventart.ir) | mobile: 09120891902 | Portfolio

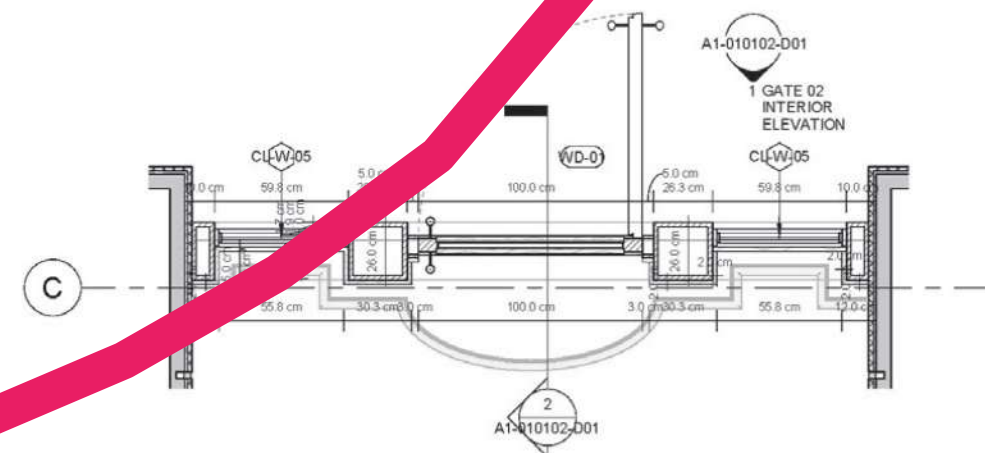




DETAILED 3D SECTION



CLASSIC WOODEN FRAME TYPE 02  
EXTERIOR ELEVATION  
1 : 20



DETAIL DESIGN FOR FACADE

designed by [www.eventart.ir](http://www.eventart.ir) | mobile: 09120891902 | Portfolio



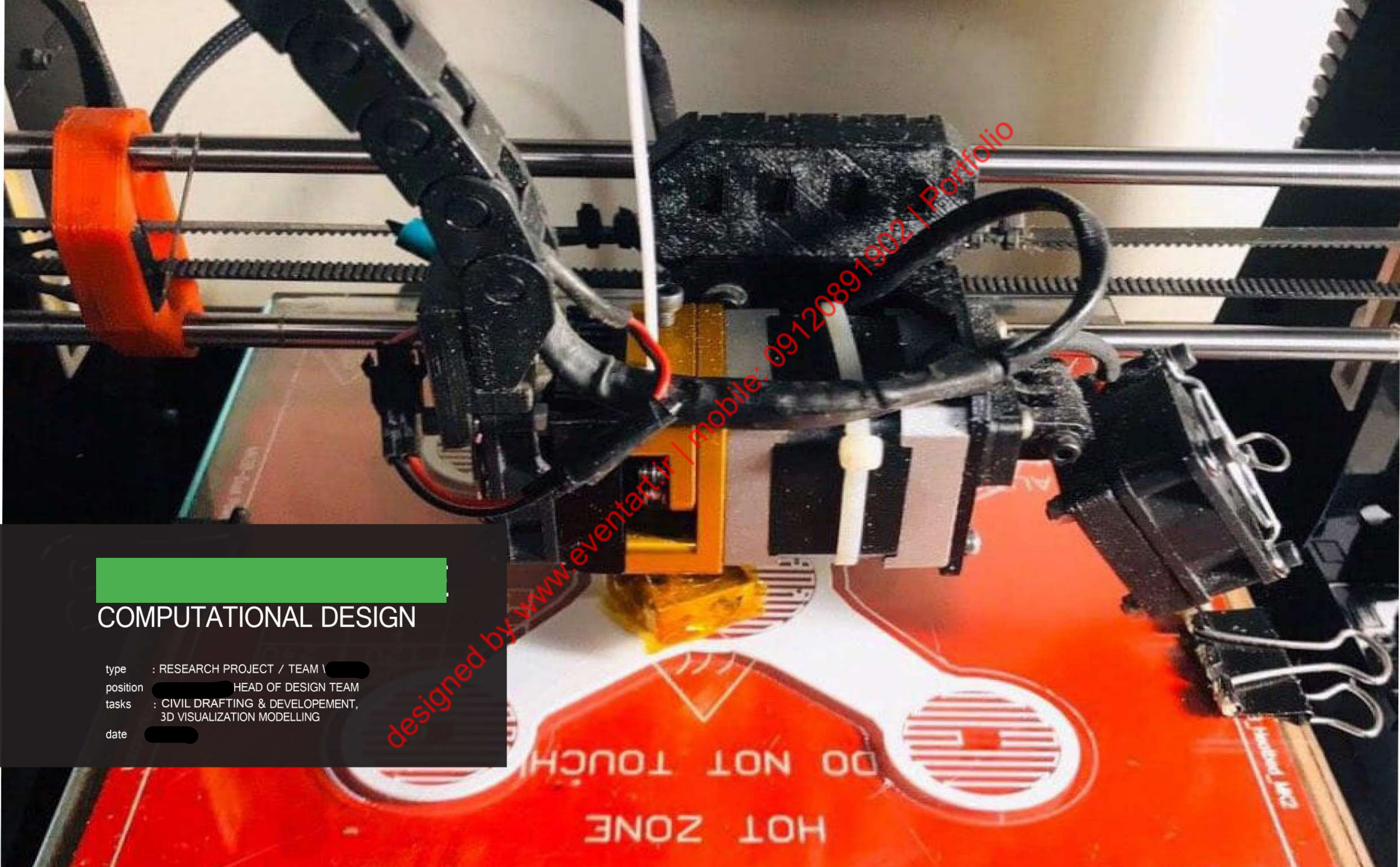


designed by [www.eventart.ir/mobile](http://www.eventart.ir/mobile). 09120891902 | Portfolio

## INTERIOR DESIGN

Special Colour Palette consists of neutral colours like Gray and emphasis colour which here chose to be red. Red is emphasizing on energetic aspects of commercial space and environment.





## COMPUTATIONAL DESIGN

type : RESEARCH PROJECT / TEAM \ [REDACTED]  
position [REDACTED] HEAD OF DESIGN TEAM  
tasks : CIVIL DRAFTING & DEVELOPEMENT,  
3D VISUALIZATION MODELLING  
date [REDACTED]





STEP 01

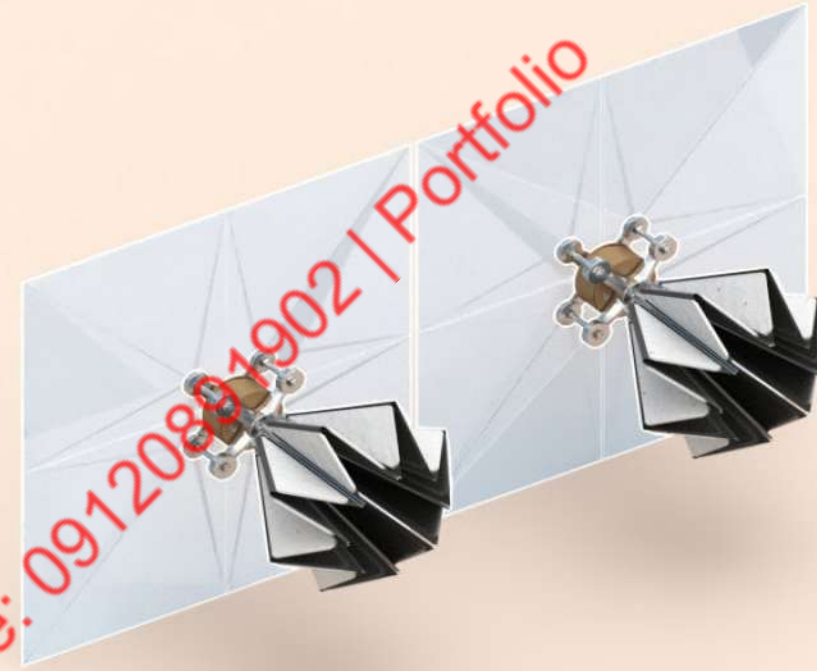


STEP 02

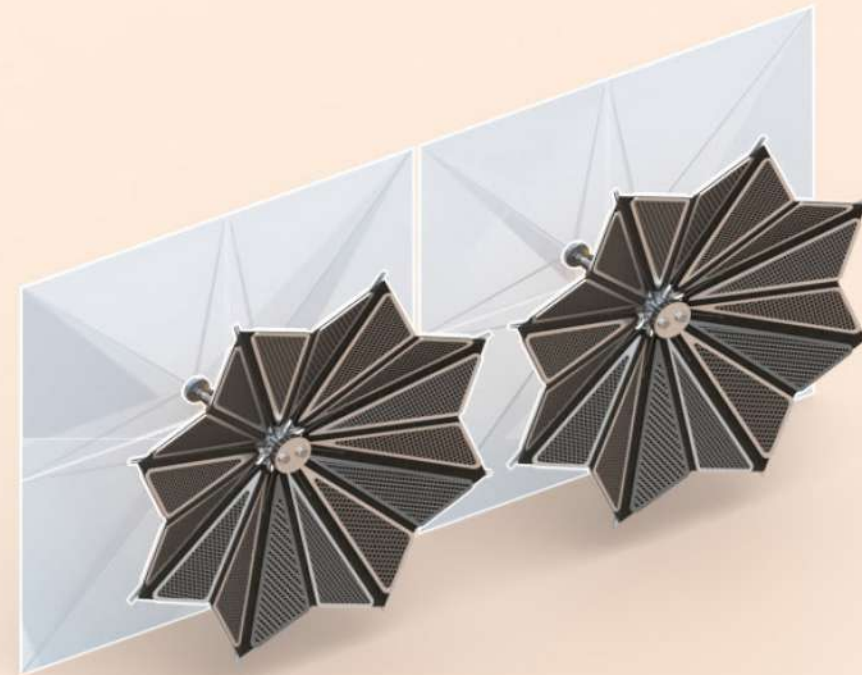
### PROJECT BRIEF :

██████████ were commissioned to suggest ideas for an expressive Smart module with some kind of smart sensors embed in it. Therefore the group came out with the idea of a sunshade module which to be portable and smart and to be installed on the full glass facades like Spider curtain wall systems. The touchstone of the design was finding a spatial relationship between the sunshade system and the servo motors rotations. Early paper prototype was worked pretty well, so we developed the design to more complicated stage and added Ultrasonic, Sound and LDR sensors to allow the module sense the environment. All the other additional electronic parts like Servo, Boards and Batteries and wires have been located in a Box so ██████████. This Smart portable sunshade is capable of installing on all the full Facade c ██████████.

designed by [www.eventart.ir](http://www.eventart.ir) | mobile: 09120891902 | Portfolio



STEP 01  
FULL CLOSED

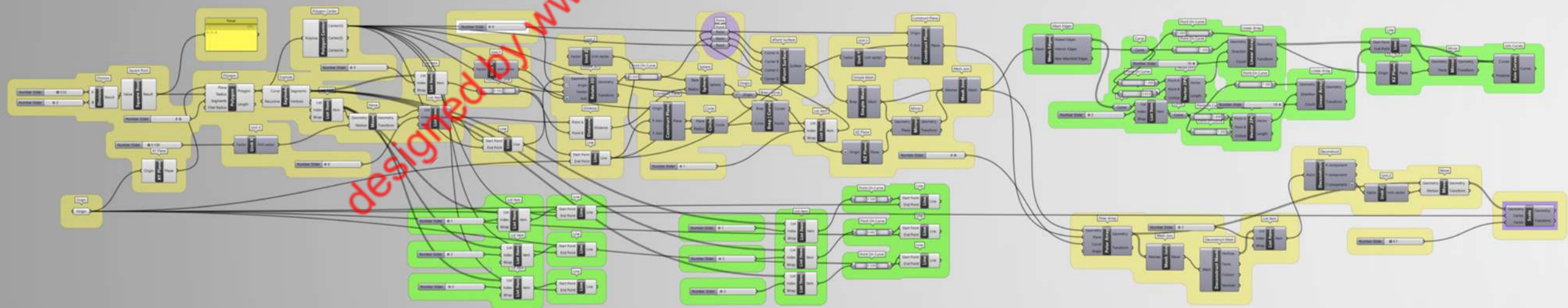


STEP 02  
FULL OPENED

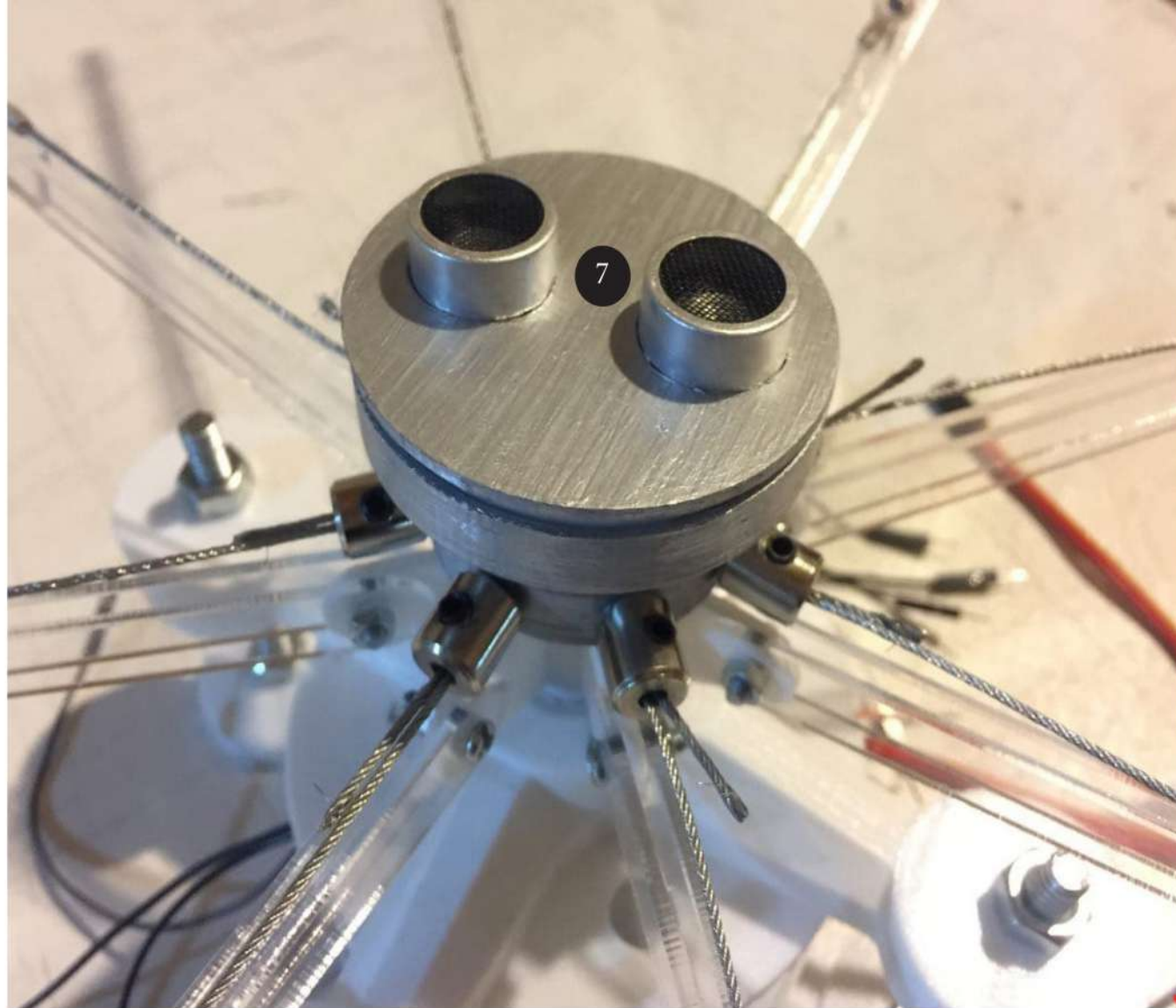




PARTIAL [REDACTED]







7 . Prototype Detailed View



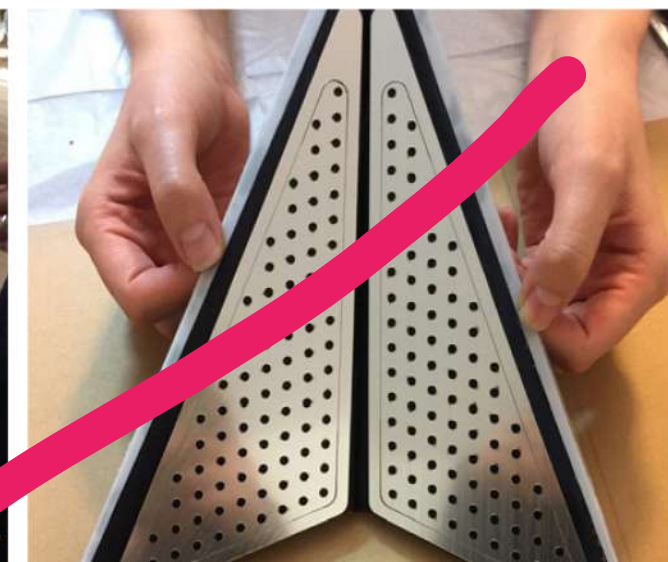
1 . LDR Sensors' Detail



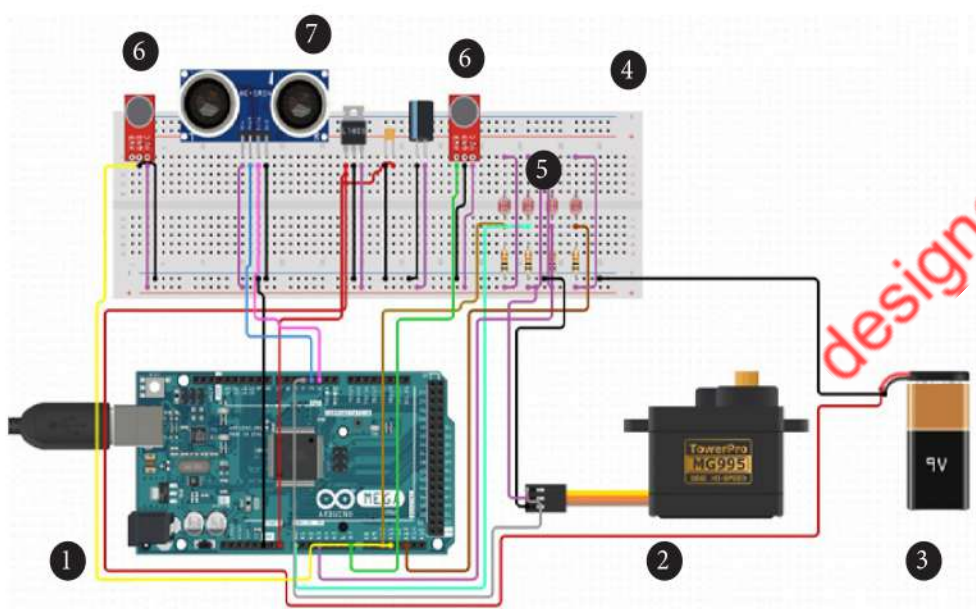
2 . 3D Printed Elements



3 . Umbrella Fabric as Outer Skin

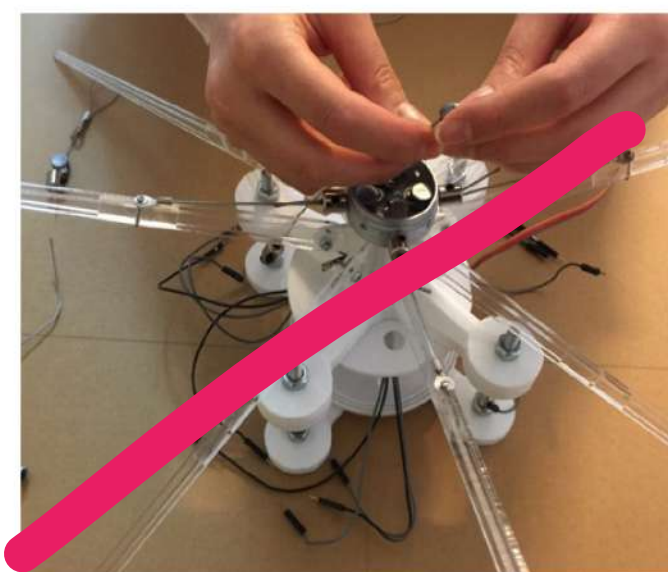


4

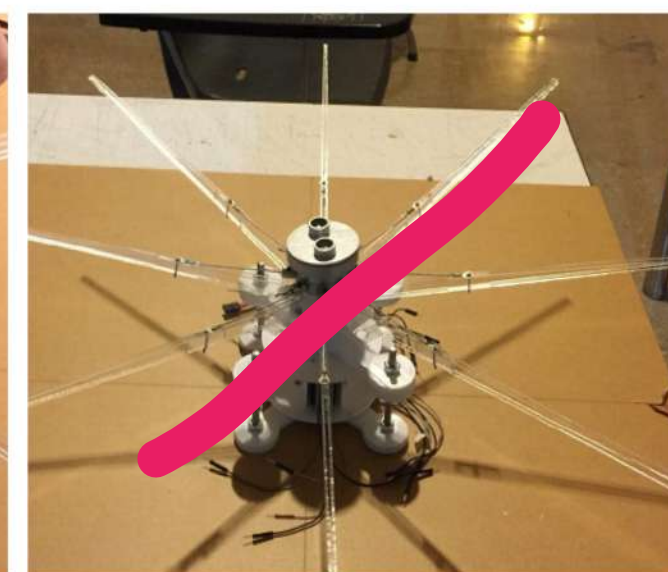


## CIRCUIT PARTS

- 1 Arduino Mega
- 2 High Torque Servo
- 3 Battery (2)
- 4
- 5 LDR Sensors (4)
- 6 Sound Sensors (2)
- 7



5 . Module's Smart Box (Brain)



6 . Module's

designed by [www.eventart.ir](http://www.eventart.ir) | mobile: 0912089902 | Portfolio





designed by [www.eventart.ir](http://www.eventart.ir) / mobile: 09120891902 | Portfolio



renovation

location : TEHRAN [redacted]

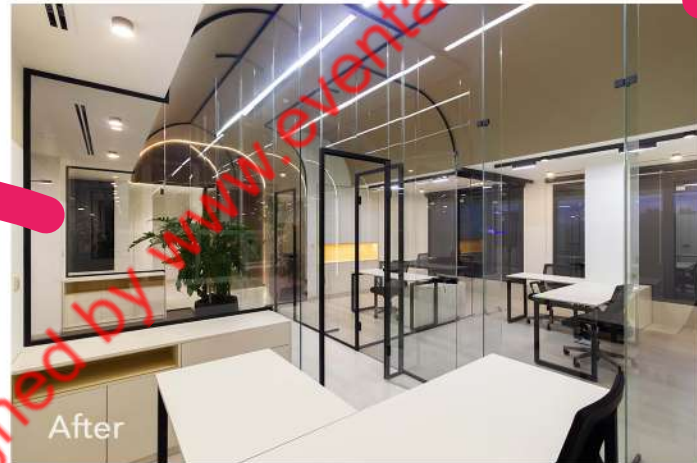
company : TEAM GROUP

position : TEAM COORDINATOR

tasks [redacted] COORDINATION AND CIVIL DRAFTING

duratio [redacted]

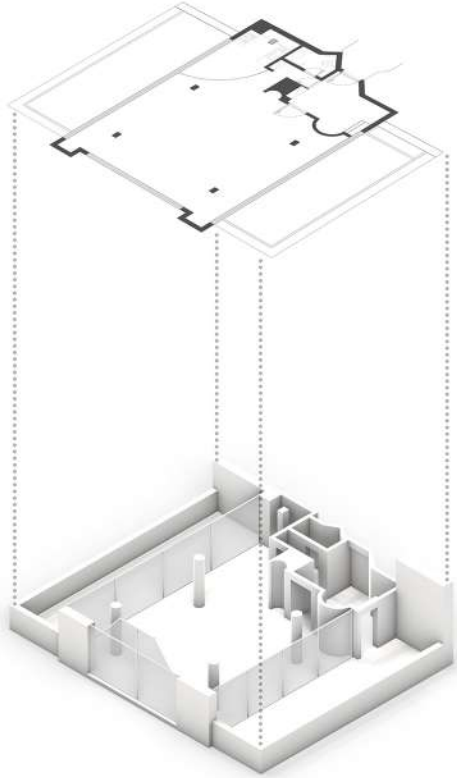




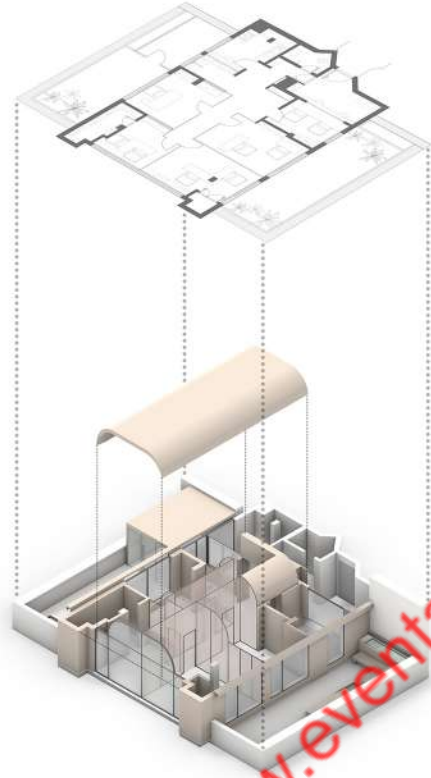
| FUNCTIONAL DIAGRAM |

designed by [www.eventart.ir](http://www.eventart.ir) | mobile: 09120891902 | Portfolio



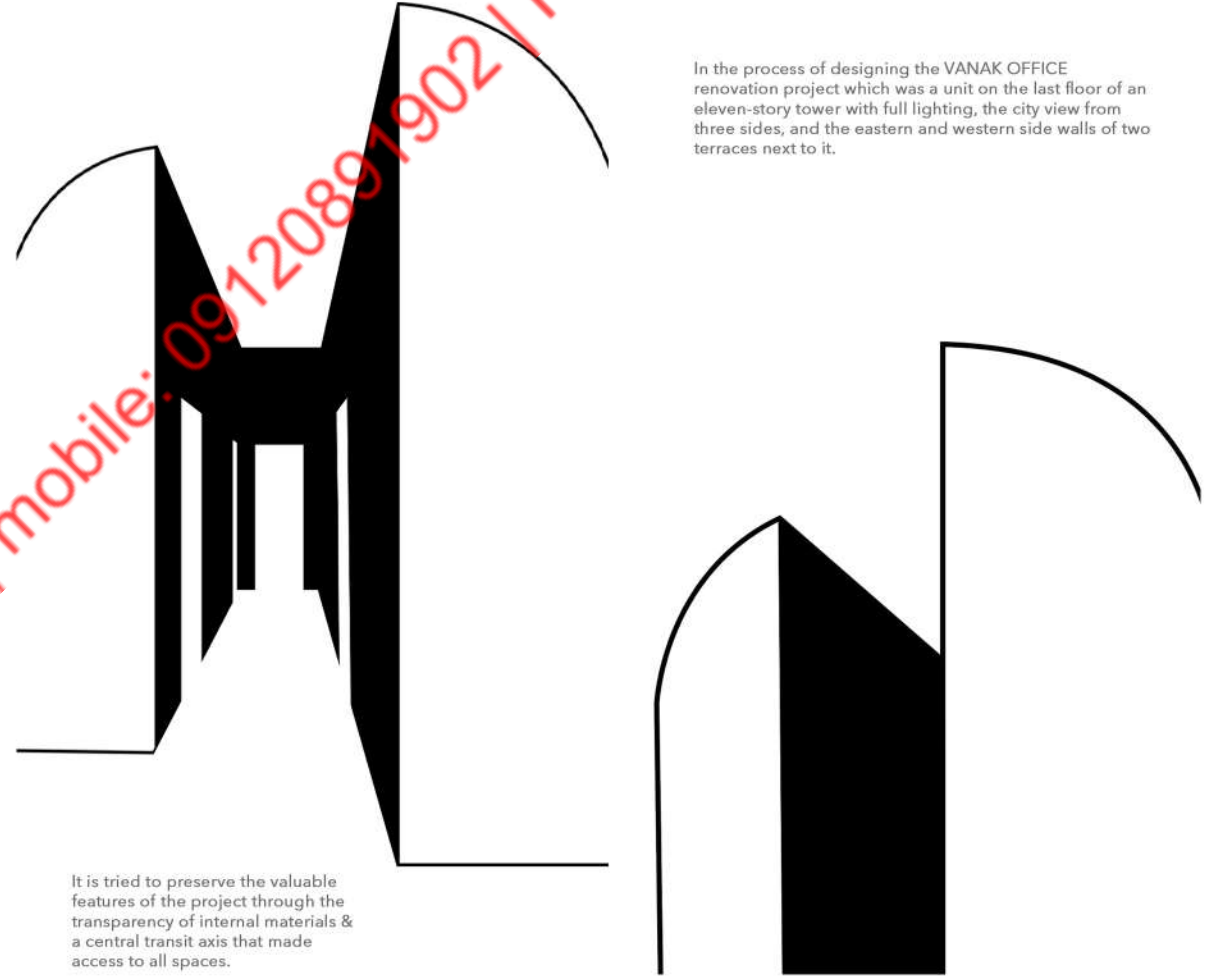


EXISTENCE SITUATION



DESIGNED SITUATION

| EXPLOSIVE DIAGRAM |

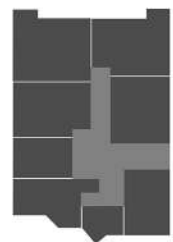
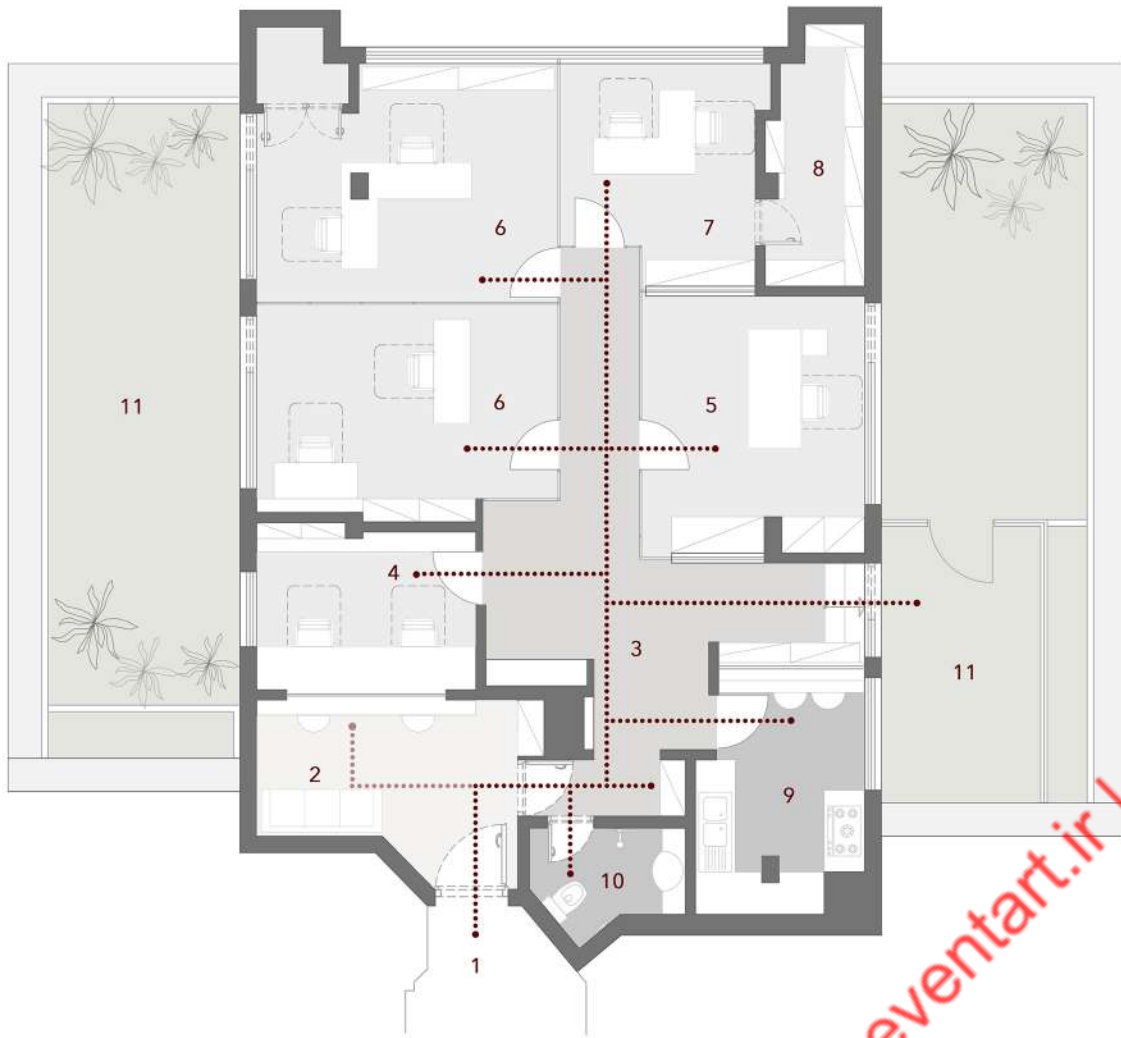


It is tried to preserve the valuable features of the project through the transparency of internal materials & a central transit axis that made access to all spaces.

In the process of designing the VANAK OFFICE renovation project which was a unit on the last floor of an eleven-story tower with full lighting, the city view from three sides, and the eastern and western side walls of two terraces next to it.

designed by [www.eventart.ir](http://www.eventart.ir) | mobile: 09120891902 | Portfolio





LEGEND

- 1. Entrance
- 2. Lobby
- 3. Corridor
- 4. Reception
- 5. Management
- 6. Office

- 7. Financial
- 8. Archive
- 9. Kitchen
- 10. Restroom
- 11. Terrace

designed by [www.eventart.ir](http://www.eventart.ir) / mobile: 09120891902 / Portfolio



| DESIGNED PLAN |

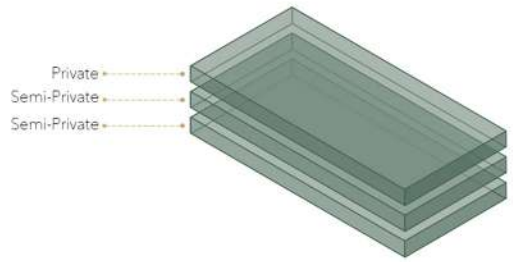


[Redacted]  
location : [Redacted] N  
company : [Redacted] GROUP  
position : TEAM COORDINATOR  
tasks : CONSTRUCTION AND CIVIL DRAFTING  
duration : [Redacted]



designed by [www.eventart.ir](http://www.eventart.ir) | mobile: 09120891902 | Portfolio

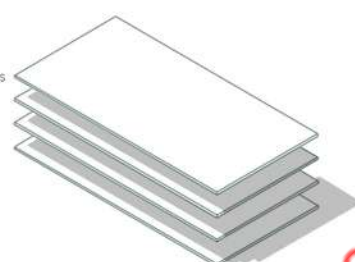




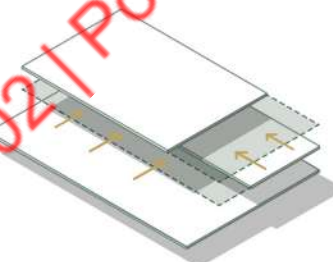
**1. Main Volume**  
Creating different zones in the floors



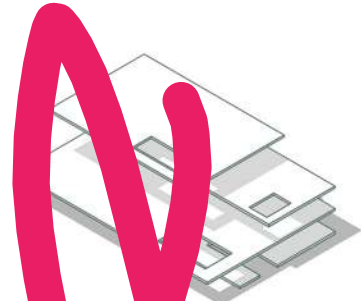
**2. Separator surfaces**  
Separator surfaces between the floors



**3. Surfaces**  
Separator surfaces



**4. Increase and decrease**  
Creating spaces with moving the surfaces

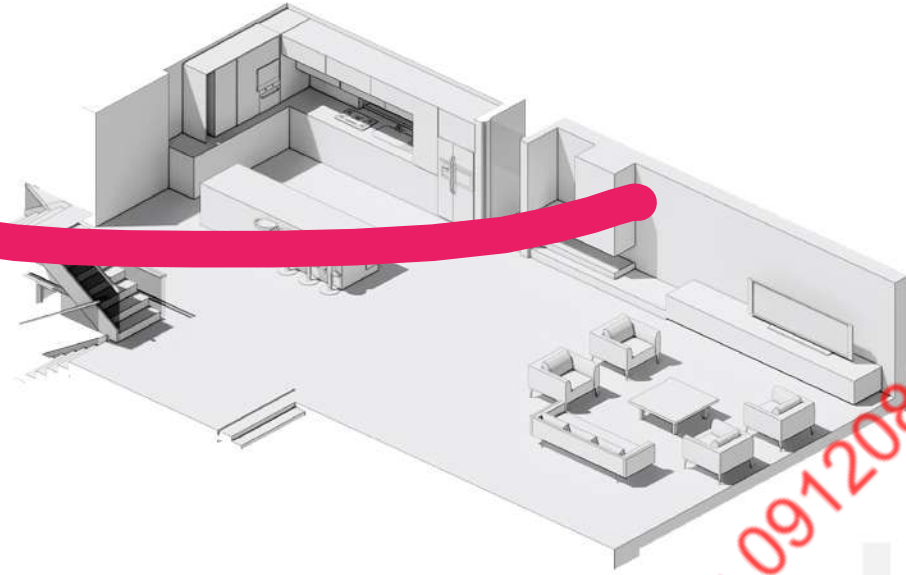


**Development**  
Creating shadow penumbra,  
Site plan and terrace

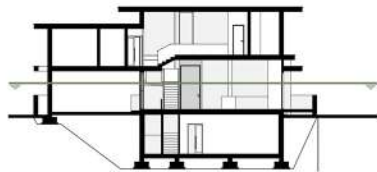




# Ground Floor Plan

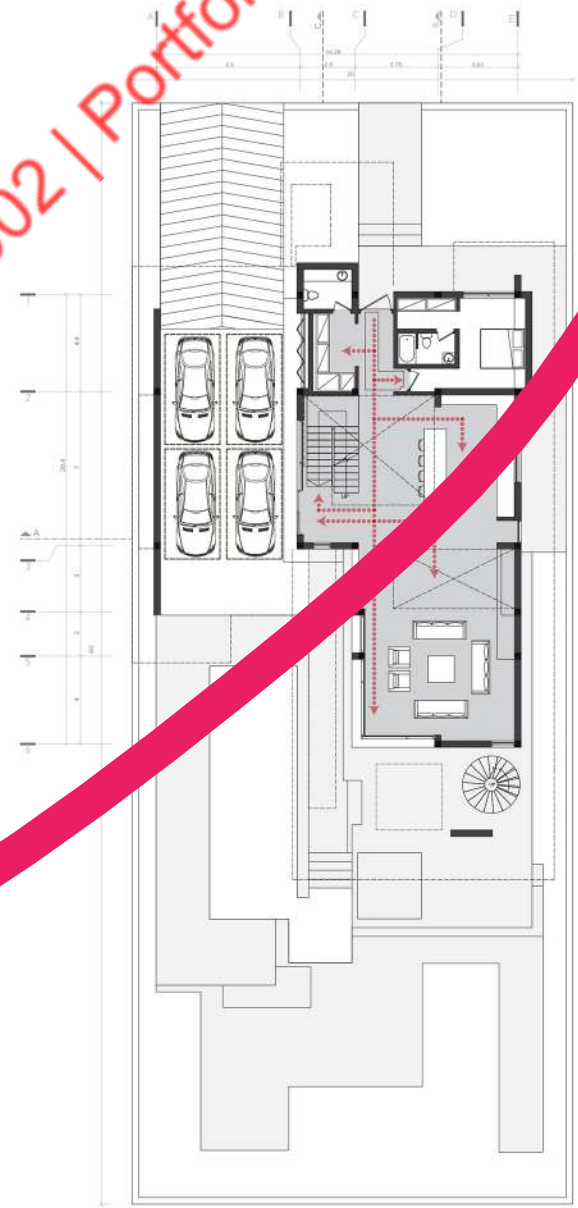
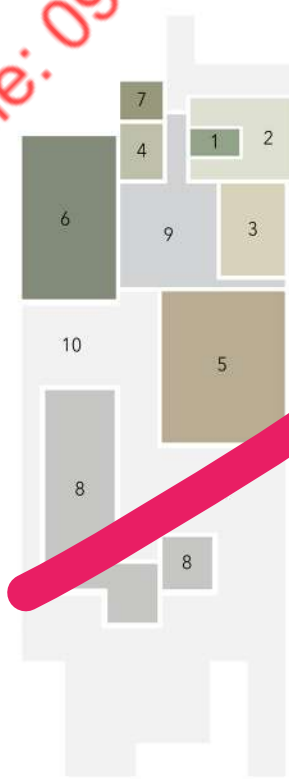


- 1 Bathroom
- 2 Bedroom
- 3 Kitchen
- 4 [Redacted]
- 5 Living Room
- 6 Parking
- 7 [Redacted]
- 8 Pool
- 9 Corridor
- 10 Yard



KEY SECTION

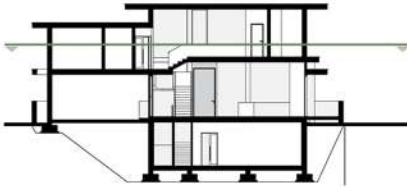
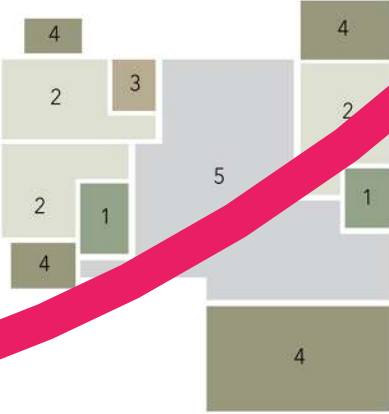
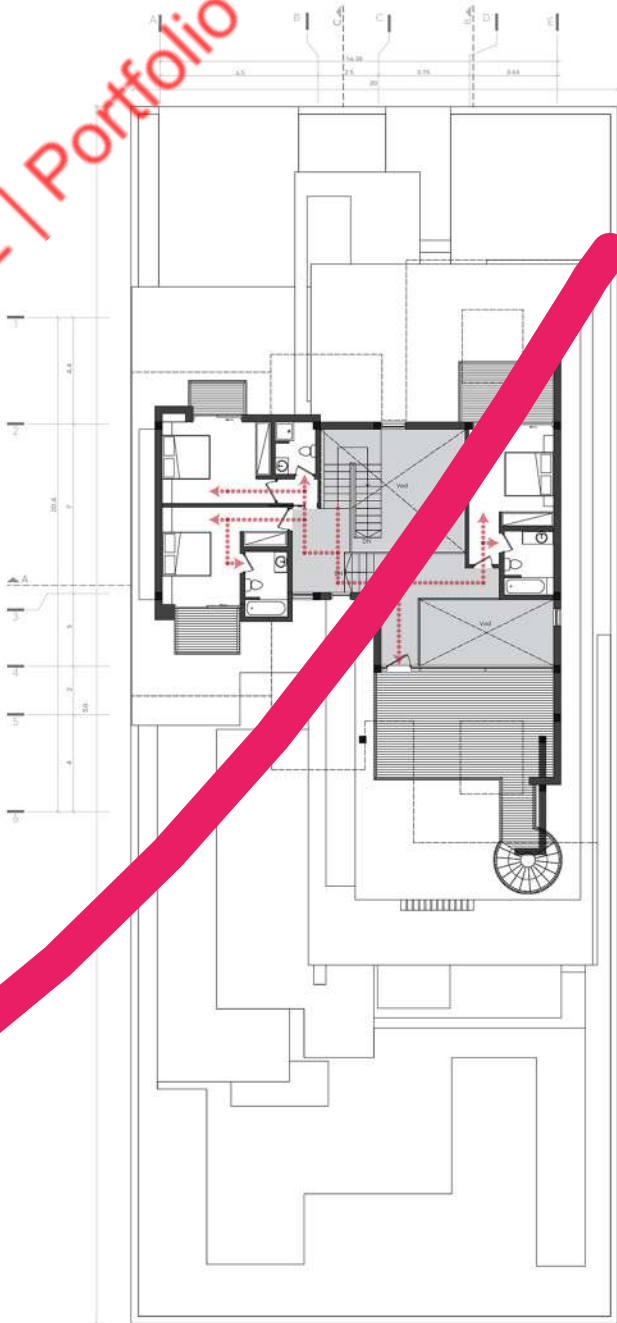
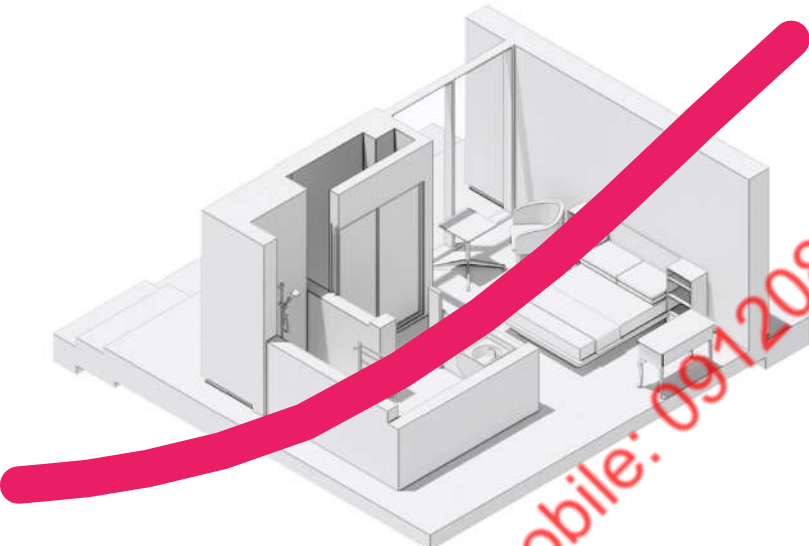
designed by [www.eventart.ir](http://www.eventart.ir) | mobile: 09120891902 | Portfolio





First Floor Plan

- 1 Bathroom
- 2 Bedroom
- 3 WC
- 4 Terrace
- 5 Corridor

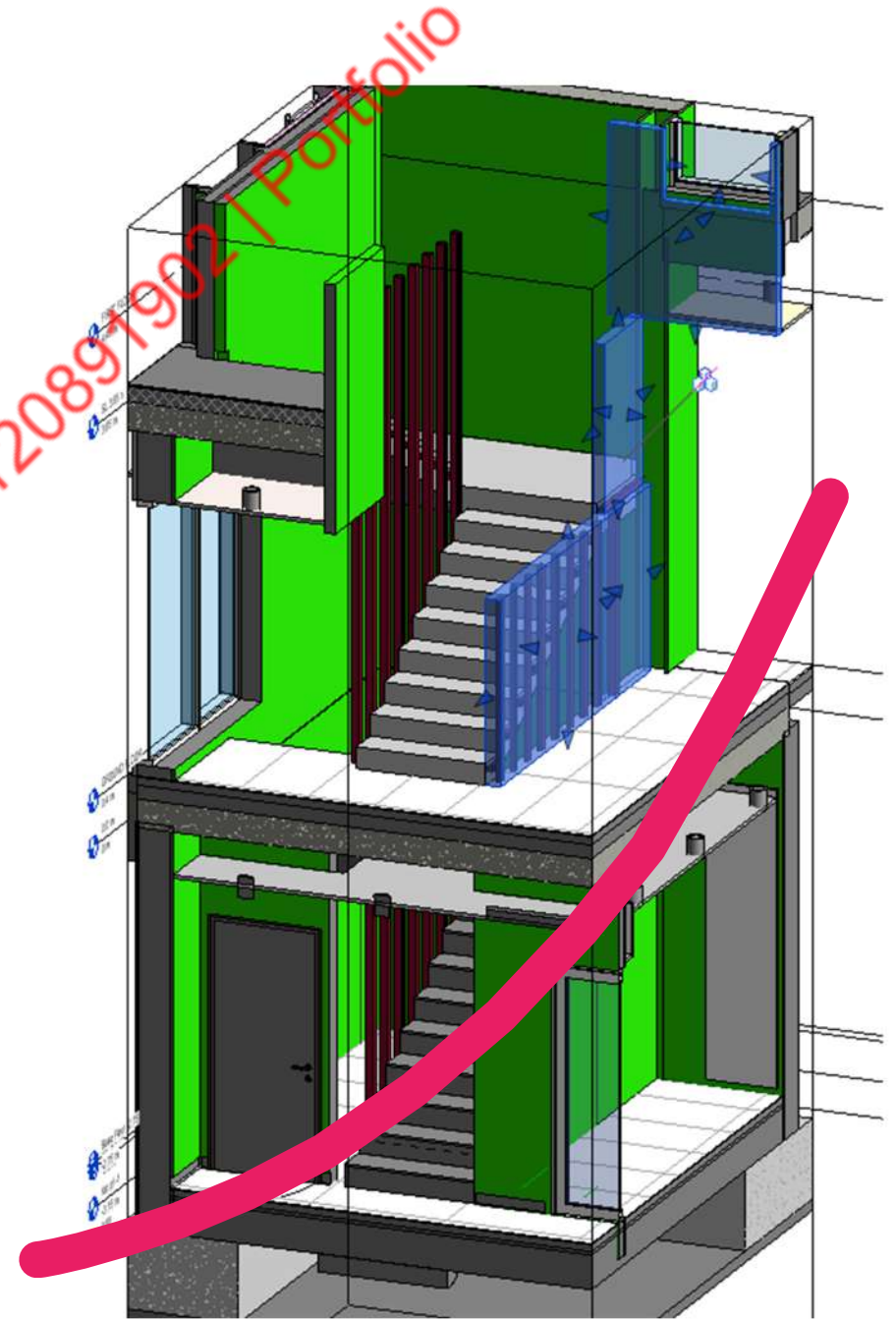
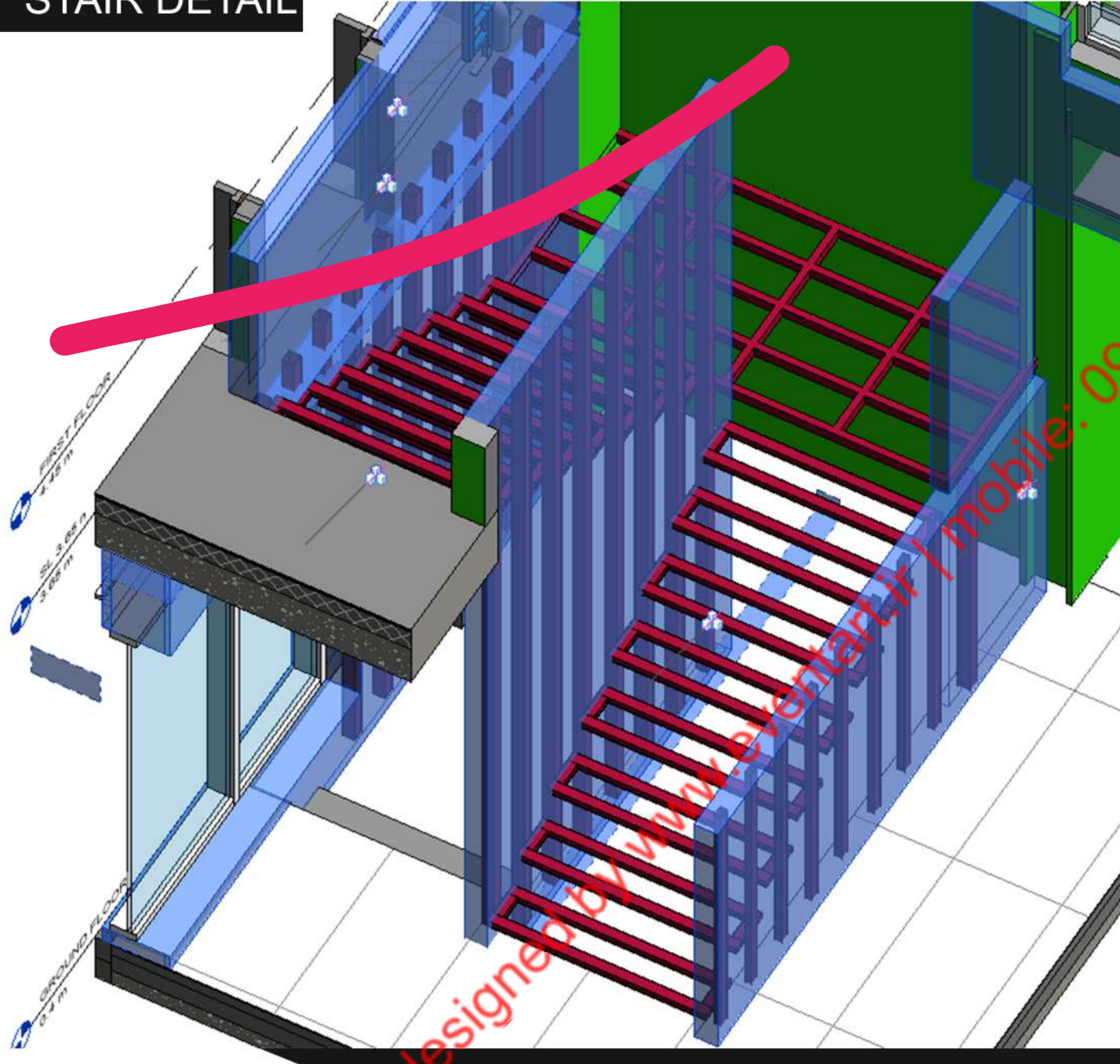


• KEY SECTION

designed by [www.eventart.ir](http://www.eventart.ir) | mobile: 09120891902 | Portfolio

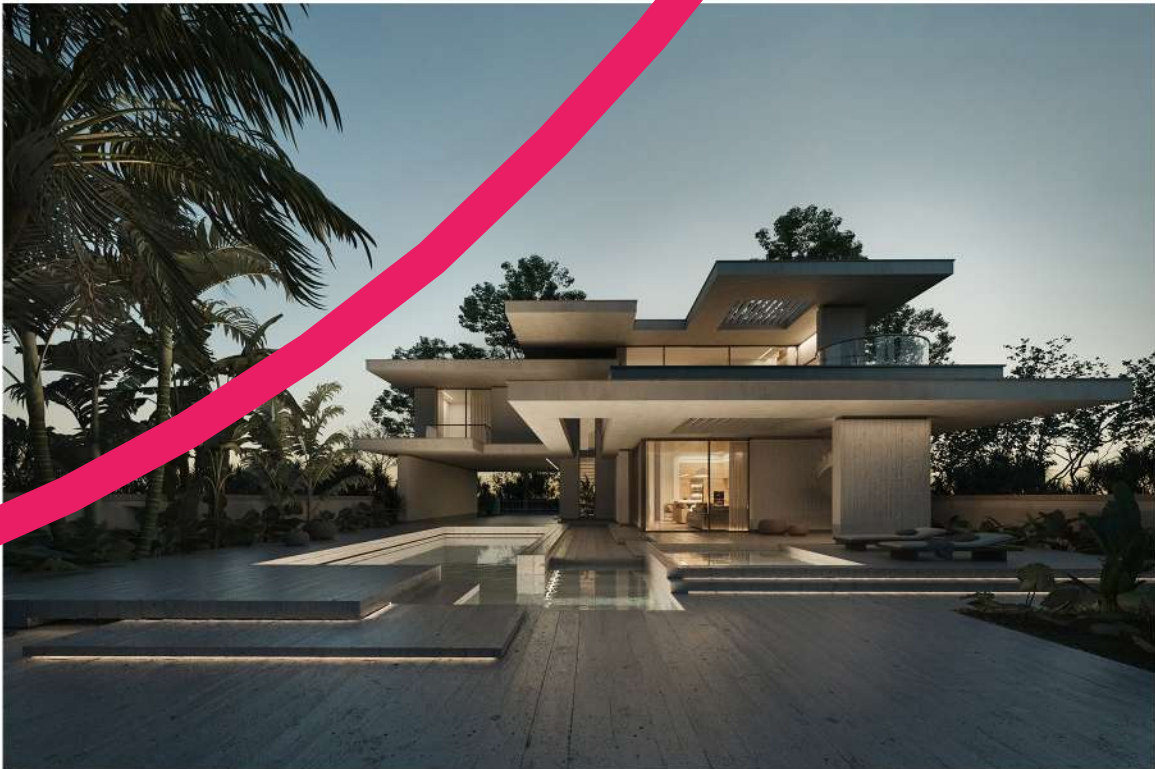


# STAIR DETAIL



designed by [www.eveller.ir](http://www.eveller.ir) | mobile: 09120891902 | Portfolio





designed by [www.eventart.ir](http://www.eventart.ir) mobile: 09120891902 / Portfolio





designed by [www.eventart.ir](http://www.eventart.ir) | mobile: 09120891902 | Portfolio

[Redacted]

company : [Redacted] IRAN  
position : TEAM COORDINATOR  
tasks : [Redacted] COORDINATION AND CIVIL DRAFTING  
duratio : [Redacted]



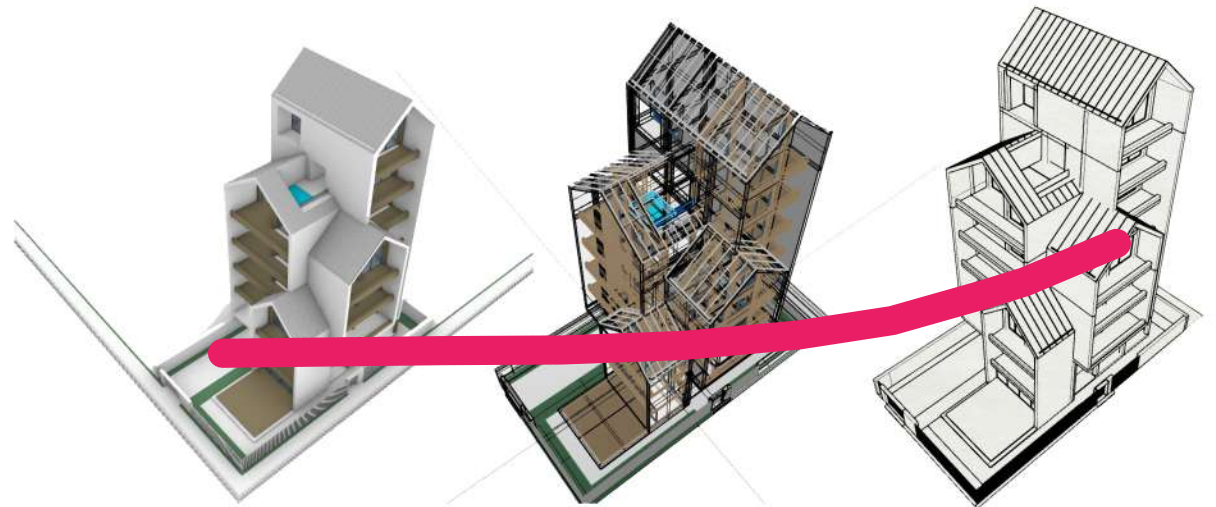
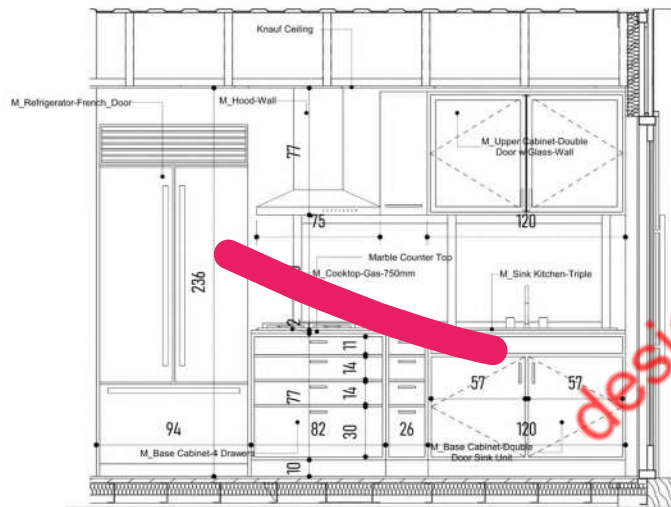


# CONFIDENTIAL

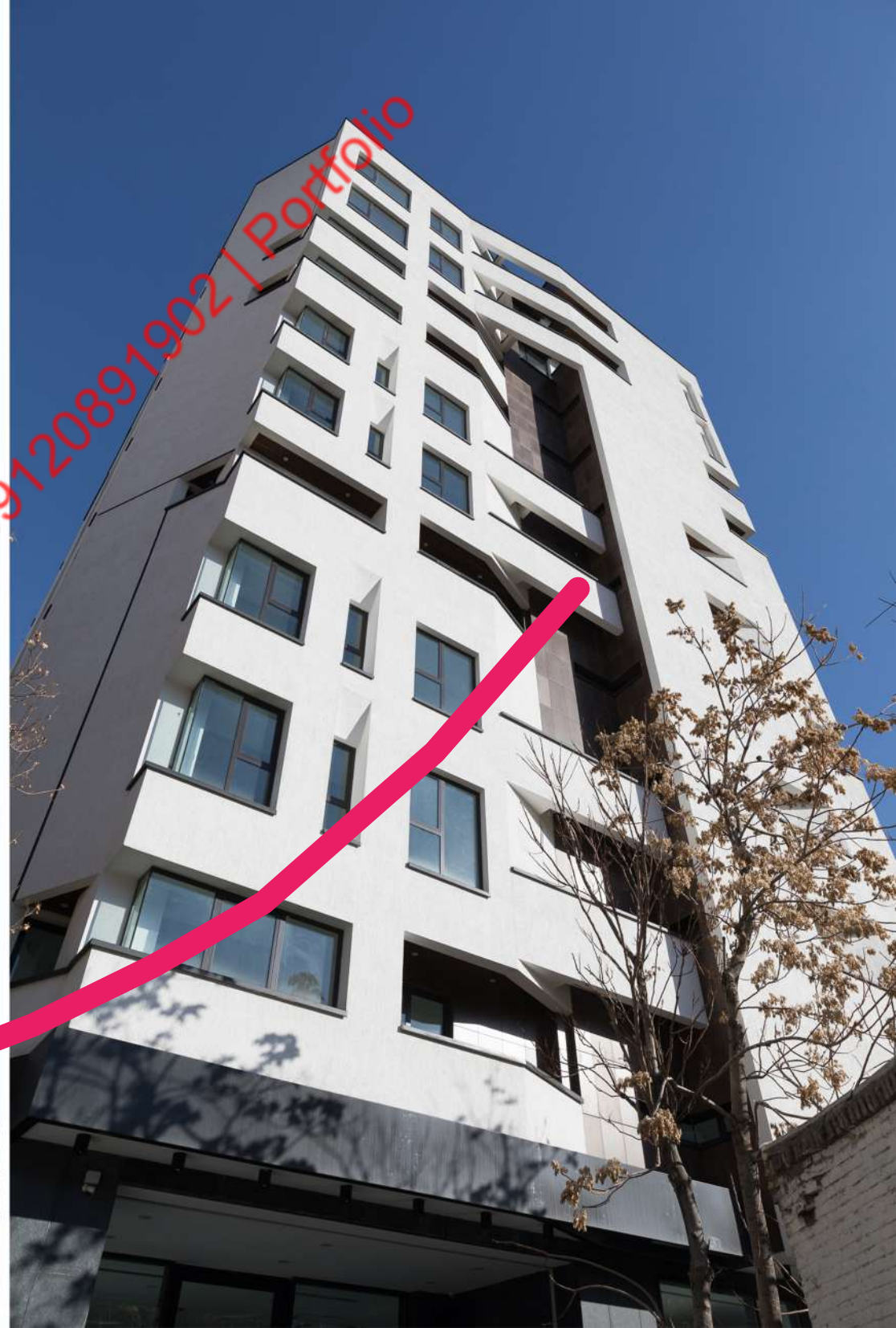
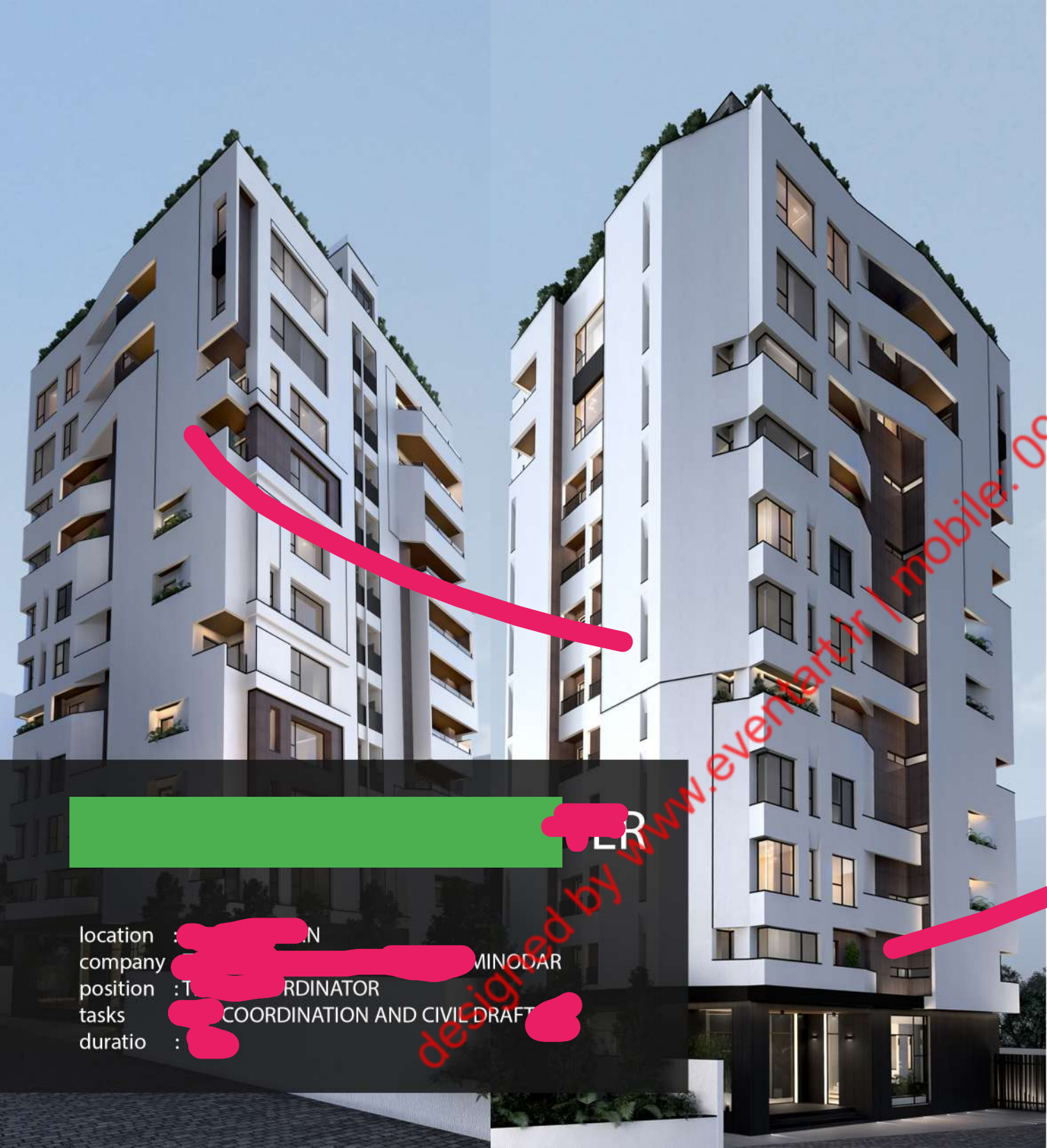
location : [REDACTED] RAN  
 company : [REDACTED] MINODAR  
 position : [REDACTED] COORDINATOR  
 tasks : [REDACTED] N AND CIVIL DRAFTING  
 duratio : [REDACTED]

designed by www.eventan.com mobile: 09120891902 | Portfolio









[Redacted] ER

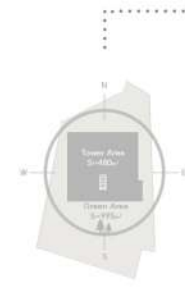
location : [Redacted] N  
company : [Redacted] MINODAR  
position : [Redacted] RDINATOR  
tasks : [Redacted] COORDINATION AND CIVIL DRAFT  
duratio : [Redacted]

designed by [www.evenart.ir](http://www.evenart.ir) | mobile: 09120891902 | Portfolio





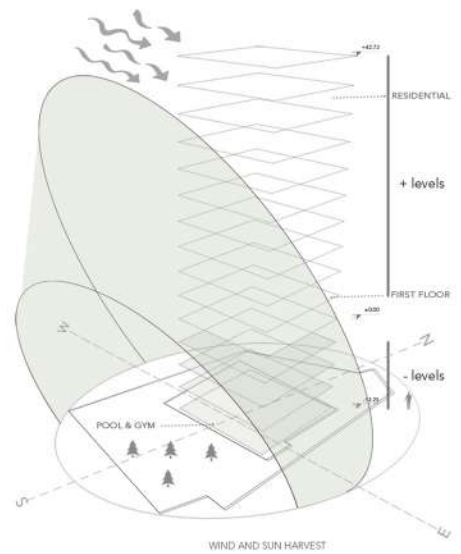
# SITE ANALYSIS



TOWER ORIENTATION ON THE SITE



REGRESSION DIAGRAM OF THE SUN



WIND AND SUN HARVEST



PROJECT ISOMETRIC VIEW



FIRST UNDERGROUND SPACES ANALYSIS

- Conference Hall Zone
- Service Zone
- Vertical Access Zone

designed by [www.eventart.ir](http://www.eventart.ir) | mobile: 09120891902 | Portfolio



ARIANA GARDEN TOWER  
Elahiyeh, Tehran



designed by [www.eventart.ir](http://www.eventart.ir) | mobile: 09120891902 | Portfolio